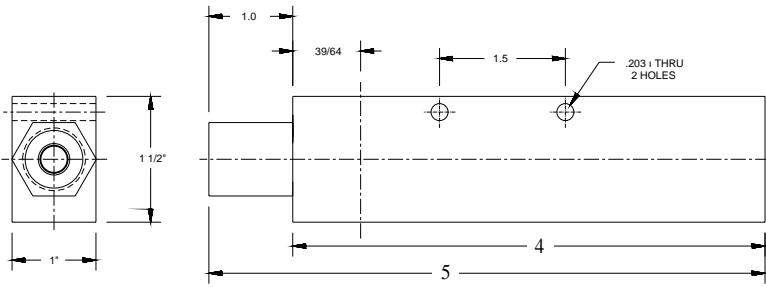
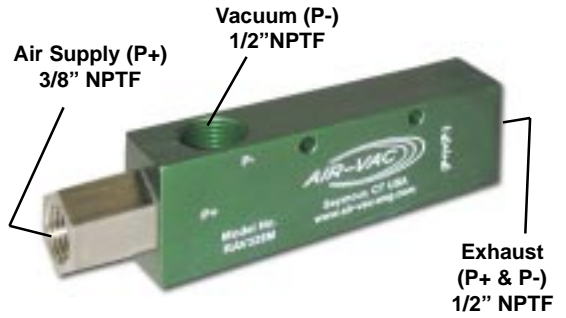




# RAV SERIES DATA SHEET



## SINGLE STAGE

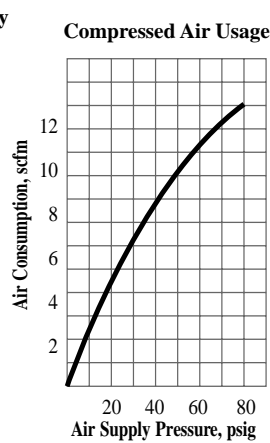
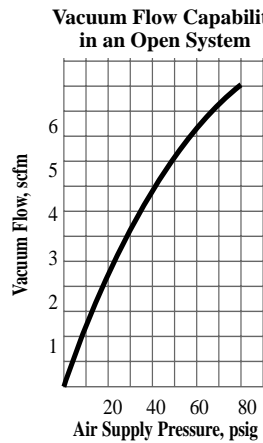
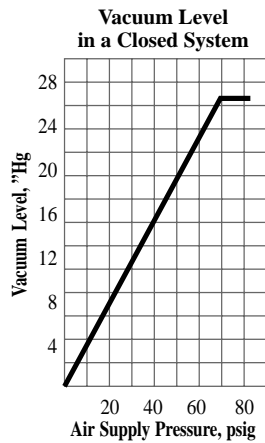


Simple Single Stage design generates vacuum quickly. Two piece construction has no moving parts and no gaskets or seals to wear.

## “H” Version

Produces vacuum levels up to 27”Hg and vacuum flow rates up to 7.0 scfm.

<b>Model Number</b>	<b>RAV250H</b>
Vacuum Level, ”Hg	27.0
Vacuum Flow, scfm	7.0
Air Consumption, scfm	12.6
Weight, oz.	11
Sound Level, dBA	80



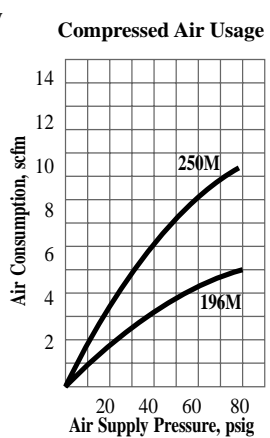
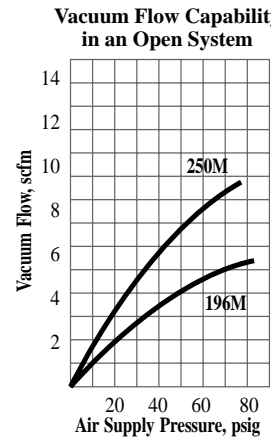
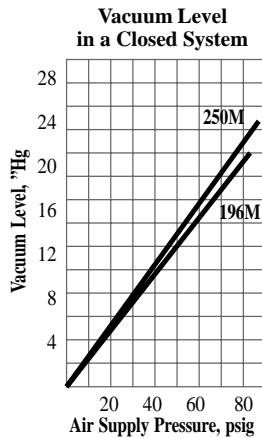
Time in Seconds to Evacuate a Volume of 1 Cubic Foot								
”Hg	3	6	9	12	15	18	21	24
RAV250H	.7	2.0	3.0	4.5	6.7	12	19	41

Vacuum Flow Rate, scfm vs. Vacuum Level, ”Hg									
”Hg	0	3	6	9	12	15	18	21	24
RAV250H	7.0	5.6	4.4	3.9	3.0	1.9	1.1	.6	.2

## “M” Version

Produces vacuum levels up to 21.4”Hg and vacuum flow rates up to 8.5 scfm.

<b>Model Number</b>	<b>RAV196M</b>	<b>RAV250M</b>
Vacuum Level, ”Hg	19.6	21.4
Vacuum Flow, scfm	5.3	8.5
Air Consumption, scfm	4.9	9.1
Weight, oz.	11	11
Sound Level, dBA	70	74

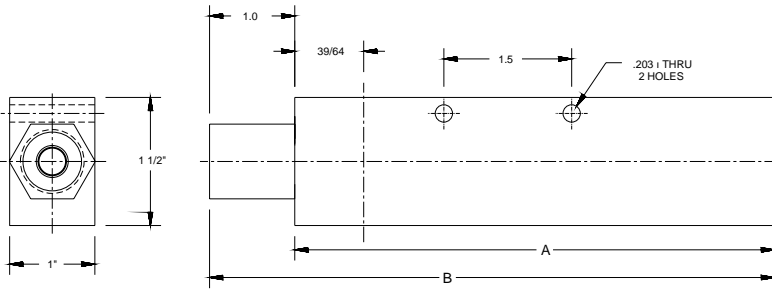


Time in Seconds to Evacuate a Volume of 1 Cubic Foot							
”Hg	3	6	9	12	15	18	
RAV196M	.60	2.0	4.1	4.9	7.2	17.0	
RAV250M	.50	1.0	1.5	4.0	5.0	11.2	

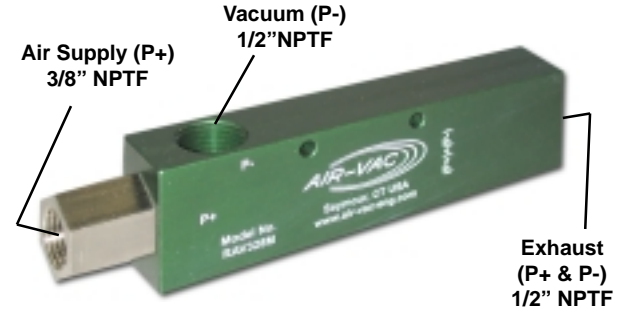
Vacuum Flow Rate, scfm vs. Vacuum Level, ”Hg								
”Hg	0	3	6	9	12	15	18	
RAV196M	5.3	5.2	4.8	4.2	3.4	2.2	0.7	
RAV250M	8.5	7.6	6.3	5.0	4.7	3.2	1.4	

• Materials of construction: anodized aluminum - other materials available.  
 • Operating temperature (degrees): 0 to 400 F

• All data recorded at 75 psig air supply.



### SINGLE STAGE



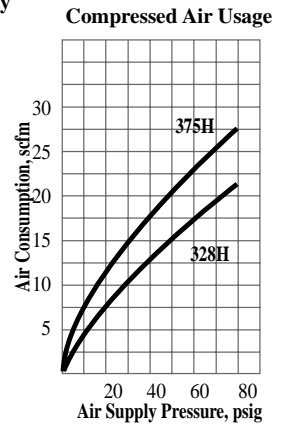
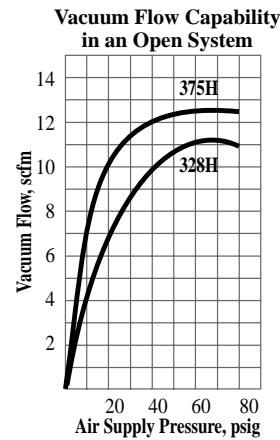
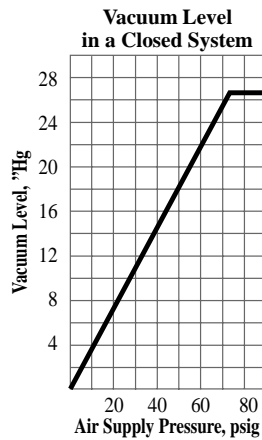
PUMP	A	B
RAV328H	5 5/8	6 5/8
RAV375H	5 5/8	6 5/8

Simple Single Stage design generates vacuum quickly. Two piece construction has no moving parts and no gaskets or seals to wear. Air supply nozzle can be removed if cleanout is ever necessary.

## "H" Version

Produces vacuum levels up to 27" Hg and vacuum flow rates up to 12.5 scfm.

Model Number	RAV328H	RAV375H
Operating Pressure, psig	75	75
Vacuum Level, "Hg	27.0	27.0
Vacuum Flow, scfm	11.1	12.5
Air Consumption, scfm	18.9	26.5
Weight, oz.	14	14
Sound Level, dBA	79	82



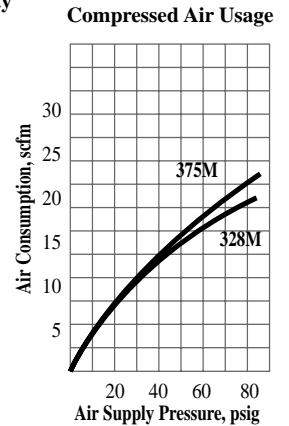
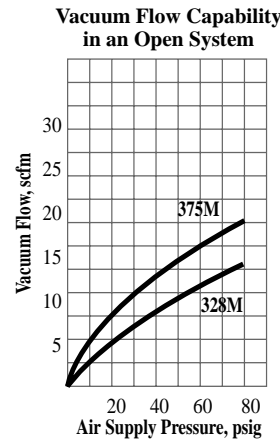
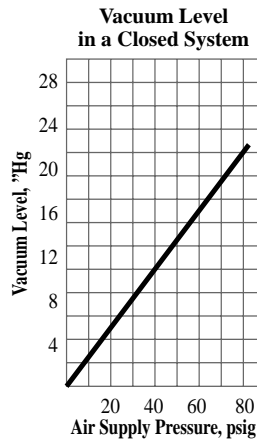
Time in Seconds to Evacuate a Volume of 1 Cubic Foot	"Hg							
	3	6	9	12	15	18	21	24
RAV328H	0.6	1.2	1.9	2.9	4.2	5.9	8.5	14.5
RAV375H	0.4	0.9	1.5	2.0	3.1	5.0	7.0	11.5

Vacuum Flow Rate, scfm vs. Vacuum Level, "Hg	"Hg								
	0	3	6	9	12	15	18	21	24
RAV328H	11.1	10.2	9.1	7.8	7.0	6.0	5.3	4.6	2.2
RAV375H	12.5	11.8	11.1	9.9	8.8	7.4	6.0	4.8	2.4

## "M" Version

Produces vacuum levels up to 23.8" Hg and vacuum flow rates up to 19.9 scfm.

Model Number	RAV328M	RAV375M
Operating Pressure, psig	75	75
Vacuum Level, "Hg	21.0	21.0
Vacuum Flow, scfm	14.8	18.2
Air Consumption, scfm	18.0	20.5
Weight, oz.	14	14
Sound Level, dBA	73	78



Time in Seconds to Evacuate a Volume of 1 Cubic Foot	"Hg						
	3	6	9	12	15	18	
RAV328M	0.3	.90	1.5	1.9	3.1	4.4	
RAV375M	0.2	.60	1.0	1.6	2.8	4.3	

Vacuum Flow Rate, scfm vs. Vacuum Level, "Hg	"Hg							
	0	3	6	9	12	15	18	
RAV328M	15.1	14.1	13.2	11.9	10.5	9.1	7.1	
RAV375M	19.9	18.6	16.8	14.6	11.3	7.7	6.4	

• Sound levels recorded with S375 mufflers, see page 26.  
 • Operating temperature: 0° to 400°F

• All data recorded at 75 psig air supply.  
 • Materials of construction: anodized aluminum body, nickel plated brass nozzle.