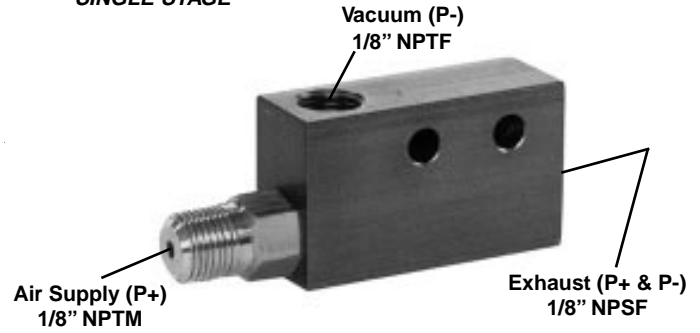
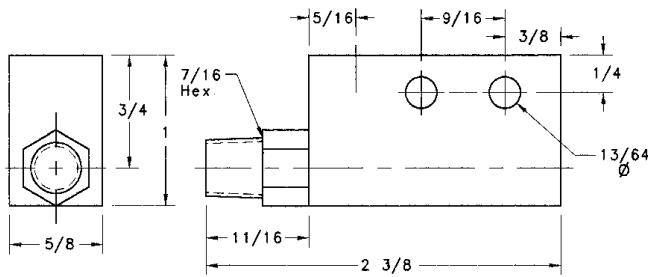


## SINGLE STAGE

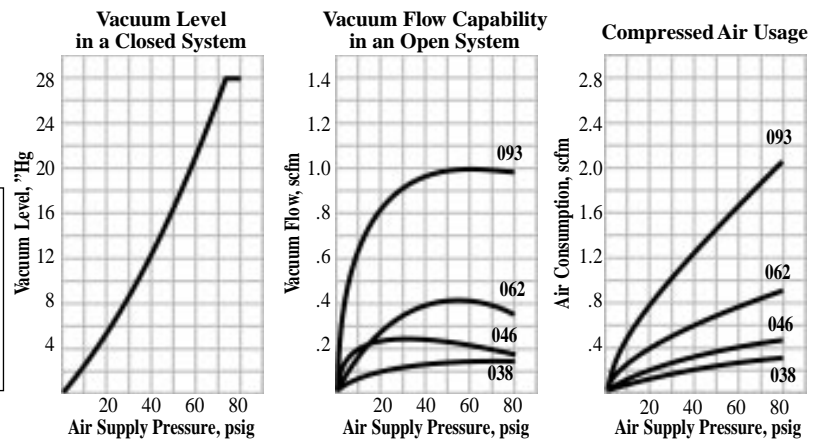


Compact and lightweight, this simple Single Stage pump quickly and efficiently generates vacuum. With no moving parts or seals, it is maintenance free. Air-Vac's most economical series is an excellent choice for small pick and place applications or for evacuating small volumes.

## "H" Version

Produces vacuum levels up to 28.0" Hg and vacuum flow rates up to 1.0 scfm.

Model Number	AVR038H	AVR046H	AVR062H	AVR093H
Vacuum Level, "Hg	27.5	27.9	28.0	28.0
Vacuum Flow, scfm	0.16	0.25	0.42	1.0
Air Consumption, scfm	0.31	0.41	0.82	1.9
Weight, oz.	2	2	2	2
Sound Level, dBA	71	72	78	82



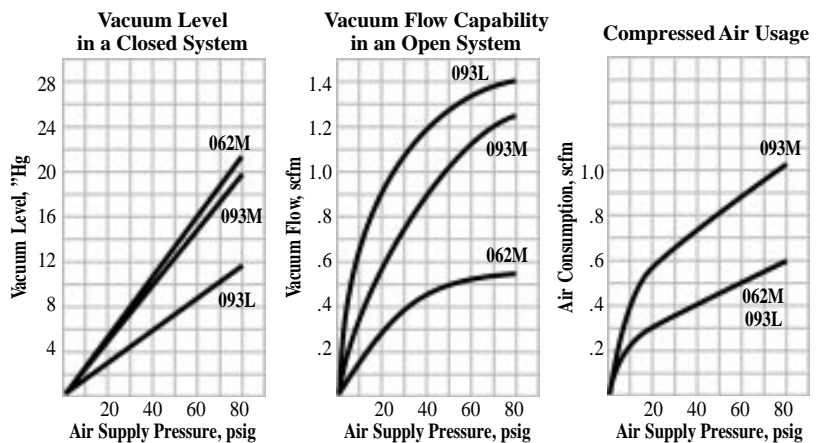
"Hg	Time in Seconds to Evacuate a Volume of 1 Cubic Foot								
	1.5	3	6	9	12	15	18	21	24
AVR038H	22	43	98	155	221	302	349	534	720
AVR046H	14	26	56	87	126	172	227	343	414
AVR062H	8.0	15	32	52	75	103	140	190	270
AVR093H	3.0	6.0	13	22	33	47	65	85	114

"Hg	Vacuum Flow Rate, scfm vs. Vacuum Level, "Hg									
	0	1.5	3	6	9	12	15	18	21	24
AVR038H	.16	.15	.14	.13	.12	.10	.09	.07	.05	.03
AVR046H	.25	.24	.23	.21	.19	.17	.14	.11	.07	.04
AVR062H	.42	.41	.38	.33	.29	.25	.20	.15	.09	.05
AVR093H	1.0	.92	.87	.74	.66	.55	.50	.37	.30	.16

## "M" and "L" Versions

Produce medium and low vacuum levels and vacuum flow rates up to 1.23 scfm, *but with substantially lower levels of air consumption than the "H" versions.*

Model Number	AVR062M	AVR093M	AVR093L
Vacuum Level, "Hg	20.0	18.3	11.0
Vacuum Flow, scfm	0.53	1.23	1.4
Air Consumption, scfm	0.54	1.0	.6
Weight, oz.	2	2	2
Sound Level, dBA	69	72	72

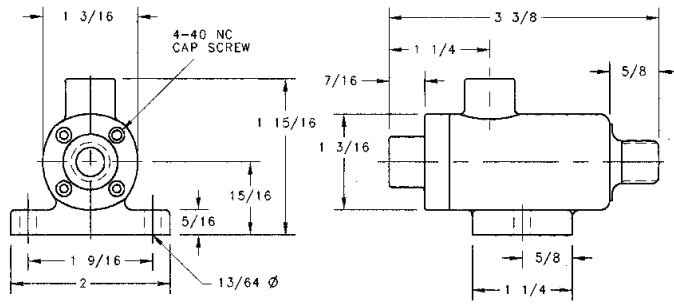


"Hg	Time in Seconds to Evacuate a Volume of 1 Cubic Foot								
	1.5	3	6	9	12	15	18		
AVR062M	6.0	11	25	40	61	89	137		
AVR093M	1.9	3.9	8.9	16.5	28.8	56			
AVR093L	1.7	3.7	9.2	22.2					

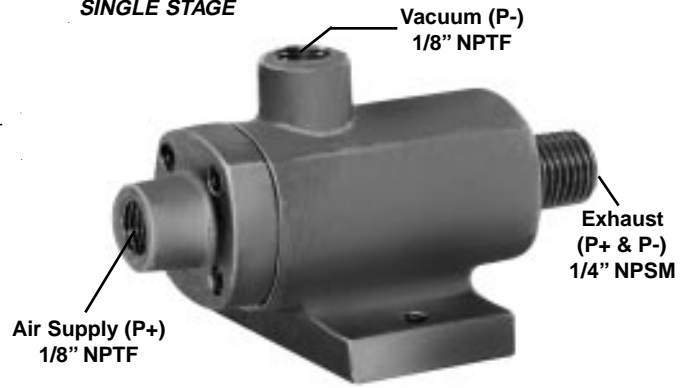
"Hg	Vacuum Flow Rate, scfm vs. Vacuum Level, "Hg									
	0	1.5	3	6	9	12	15	18		
AVR062M	.53	.51	.49	.44	.38	.30	.19	.06		
AVR093M	1.23	1.16	1.10	.92	.69	.46	.22			
AVR093L	1.4	1.27	1.13	.75	.40					

• Sound levels recorded with S18 muffler, see page 24.  
 • Materials of construction: anodized aluminum and brass - other materials available.

• Operating temperature (degrees): 0 to 400F  
 • All data recorded at 70-75 psig air supply.



SINGLE STAGE

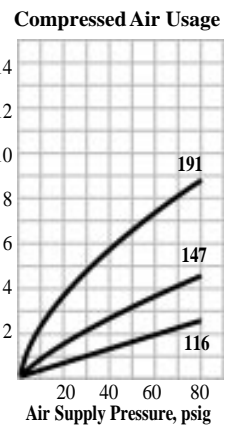
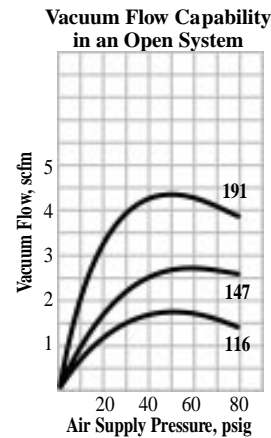
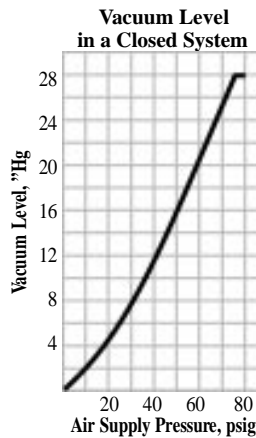


Simple Single Stage design efficiently generates vacuum. Rugged industrial design has no moving parts or seals. Outperforms expensive Multistage pumps in material handling applications operating in 12-18" Hg vacuum range.

## "H" Version

Produces vacuum levels up to 28.2" Hg and vacuum flow rates up to 4.3 scfm.

Model Number	AV116H	AV147H	AV191H
Vacuum Level, "Hg	28.0	28.2	28.2
Vacuum Flow, scfm	1.7	2.8	4.3
Air Consumption, scfm	2.7	4.3	8.1
Weight, oz.	6	6	6
Sound Level, dBA	70	72	82



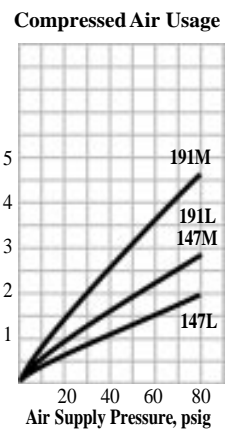
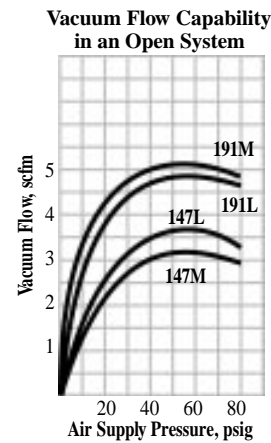
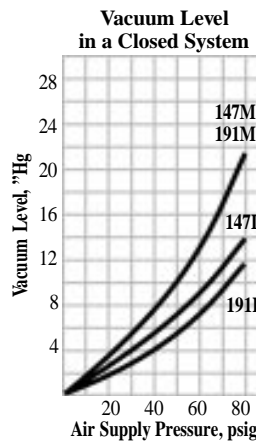
Time in Seconds to Evacuate a Volume of 1 Cubic Foot										
"Hg	1.5	3	6	9	12	15	18	21	24	
AV116H	1.3	3.1	6.7	11.9	19.0	29.8	43	100	134	
AV147H	.7	1.7	4.0	6.6	10.4	15.5	22	32.5	48	
AV191H	.4	1.0	2.4	4.2	6.3	9.3	14.5	20.8	31.5	

Vacuum Flow Rate, scfm vs. Vacuum Level, "Hg										
"Hg	0	1.5	3	6	9	12	15	18	21	24
AV116H	1.7	1.49	1.41	1.21	1.0	.81	.62	.53	.37	.22
AV147H	2.8	2.6	2.37	1.95	1.72	1.39	1.15	.91	.66	.36
AV191H	4.3	4.0	3.63	3.02	2.62	2.33	1.76	1.27	.98	.58

## "M" and "L" Versions

Produce medium and low vacuum levels and vacuum flow rates up to 5.2 scfm, *but with substantially lower levels of air consumption than the "H" versions.*

Model Number	AV147M	AV191M	AV147L	AV191L
Vacuum Level, "Hg	18.5	18.0	12.0	10.0
Vacuum Flow, scfm	3.1	5.2	3.6	4.8
Air Consumption, scfm	2.7	4.3	1.8	2.7
Weight, oz.	6	6	6	6
Sound Level, dBA	70	75	69	70

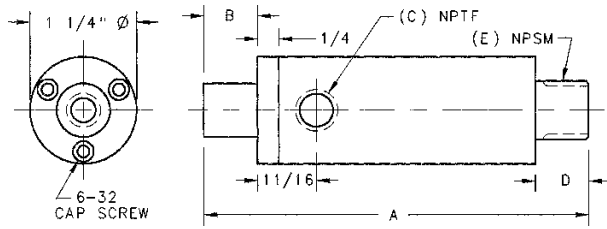


Time in Seconds to Evacuate a Volume of 1 Cubic Foot										
"Hg	1.5	3	6	9	12	15	18			
AV147M	.7	1.5	3.7	6.3	10.3	17.7	41			
AV191M	.3	.7	2.0	3.4	5.5	9.5				
AV147L	.5	1.1	3.0	6.0						
AV191L	.3	.9	2.5	6.4						

Vacuum Flow Rate, scfm vs. Vacuum Level, "Hg										
"Hg	0	1.5	3	6	9	12	15	18		
AV147M	3.10	2.84	2.73	2.34	1.81	1.31	.73	.19		
AV191M	5.20	4.54	4.10	3.31	2.80	2.08	1.35			
AV147L	3.60	3.24	2.95	2.23	1.20					
AV191L	4.80	4.28	3.58	2.21	.63					

• Sound levels recorded with S147AV muffler, see page 24.  
 • Materials of construction: anodized aluminum - other materials available.

• Operating temperature (degrees): 0 to 400 F  
 • All data recorded at 70-75 psig air supply.



	A	B	C	D	E
AVD260	3 5/8"	5/8"	1/8"	5/8"	1/4"
AVD320	4 1/2"	5/8"	1/4"	5/8"	3/8"
AVD380	5 1/2"	7/8"	1/4"	3/4"	3/8"

### SINGLE STAGE

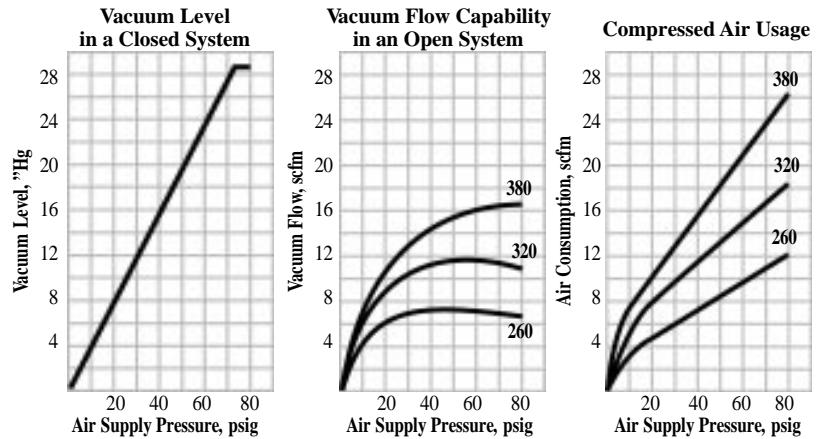


Simple Single Stage design generates vacuum quickly. Two piece construction has no moving parts and no gaskets or seals to wear. Outperforms expensive Multistage pumps in material handling applications operating in 12-18" Hg vacuum range.

### "H" Version

Produces vacuum levels up to 28.4" Hg and vacuum flow rates up to 16.3 scfm.

Model Number	AVD260H	AVD320H	AVD380H
Vacuum Level, "Hg	28.0	28.2	28.4
Vacuum Flow, scfm	7.3	11.9	16.3
Air Consumption, scfm	10.9	17.9	25.0
Weight, oz.	5	7	8
Sound Level, dBA	83	90	86

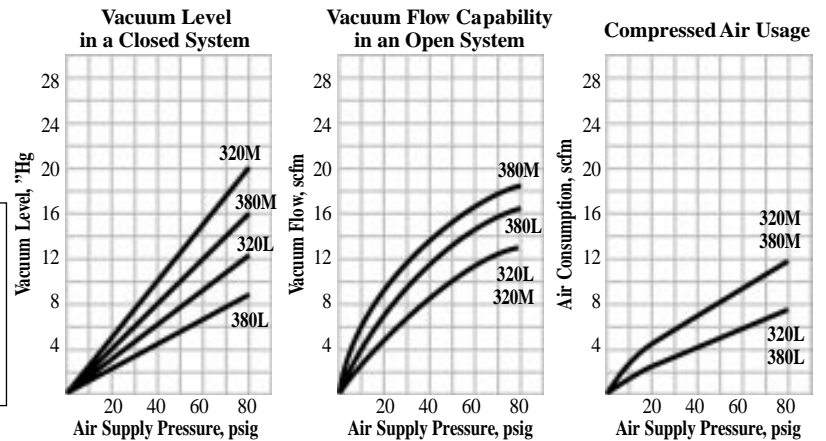


Time in Seconds to Evacuate a Volume of 1 Cubic Foot										Vacuum Flow Rate, scfm vs. Vacuum Level, "Hg										
"Hg	1.5	3	6	9	12	15	18	21	24	"Hg	0	1.5	3	6	9	12	15	18	21	24
AVD260H	.3	.6	1.8	2.9	4.3	6.5	11	18	39	AVD260H	7.3	6.5	5.8	4.6	4.1	3.2	2.2	1.4	.9	.5
AVD320H	.2	.4	1.0	1.7	3.0	4.1	6.1	8.6	13	AVD320H	11.9	10.7	9.6	7.6	6.1	5.1	4.0	3.0	2.1	.9
AVD380H	.1	.2	.7	1.1	1.6	2.4	3.5	5.4	8.0	AVD380H	16.3	15.0	13.5	11.0	9.6	8.0	6.0	4.3	3.1	1.8

### "M" and "L" Versions

Produce medium and low vacuum levels and vacuum flow rates up to 18.2 scfm, *but with substantially lower levels of air consumption than the "H" versions.*

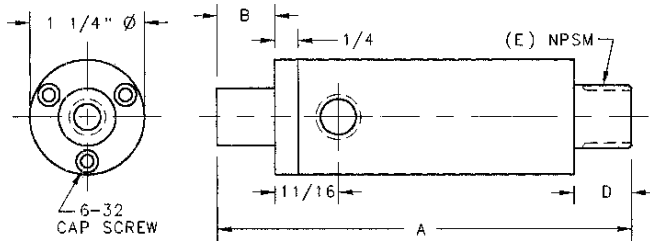
Model Number	AVD320M	AVD380M	AVD320L	AVD380L
Vacuum Level, "Hg	19.3	15.0	11.5	8.0
Vacuum Flow, scfm	13.4	18.2	13.0	16.2
Air Consumption, scfm	10.9	12.3	6.3	6.3
Weight, oz.	7	8	7	8
Sound Level, dBA	89	90	83	88



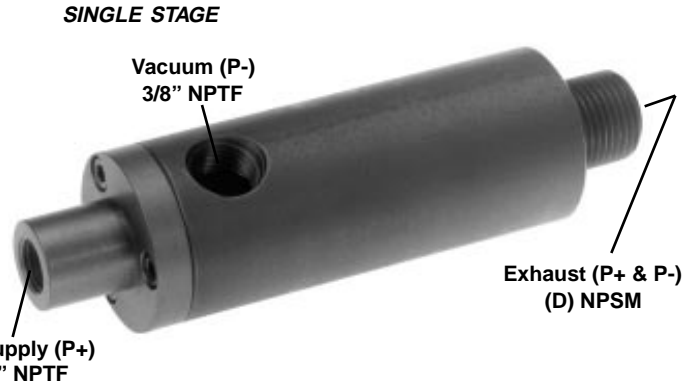
Time in Seconds to Evacuate a Volume of 1 Cubic Foot										Vacuum Flow Rate, scfm vs. Vacuum Level, "Hg											
"Hg	1.5	3	6	9	12	15	18			"Hg	0	1.5	3	6	9	12	15	18			
AVD320M	.2	.4	.9	1.6	2.4	4.1	8.1			AVD320M	13.4	11.2	9.8	8.2	6.4	4.6	2.7	1.0			
AVD380M	.1	.2	.6	1.0	1.8					AVD380M	18.2	17.3	15.5	11.6	8.9	4.5					
AVD320L	.05	.17	.5	.9						AVD320L	13.0	11.2	9.6	7.1	3.6						
AVD380L	.1	.3	.8							AVD380L	16.2	14.1	11.6	5.9							

• Sound levels recorded with mufflers, see page 24.  
 • Materials of construction: anodized aluminum - other materials available.

• Operating temperature (degrees): 0 to 400 F  
 • All data recorded at 70-75 psig air supply.



	A	B	D	E
AVD440	5 3/4"	5/8"	3/4"	3/8"
AVD500	6 1/8"	7/8"	1"	1/2"

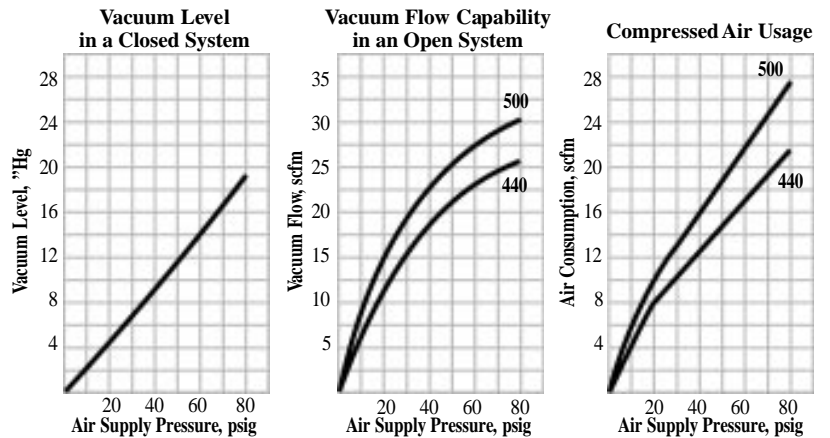


**Simple Single Stage design generates vacuum quickly. Two piece construction has no moving parts and no gaskets or seals to wear. Outperforms expensive Multistage pumps in material handling applications operating in 12-18" Hg vacuum range.**

## "M" Version

Produces vacuum levels up to 17.5" Hg and vacuum flow rates up to 29.0 scfm.

Model Number	AVD440M	AVD500M
Vacuum Level, "Hg	17.5	16.7
Vacuum Flow, scfm	25.0	29.0
Air Consumption, scfm	21.0	25.0
Weight, oz.	8	8
Sound Level, dBA	90	91



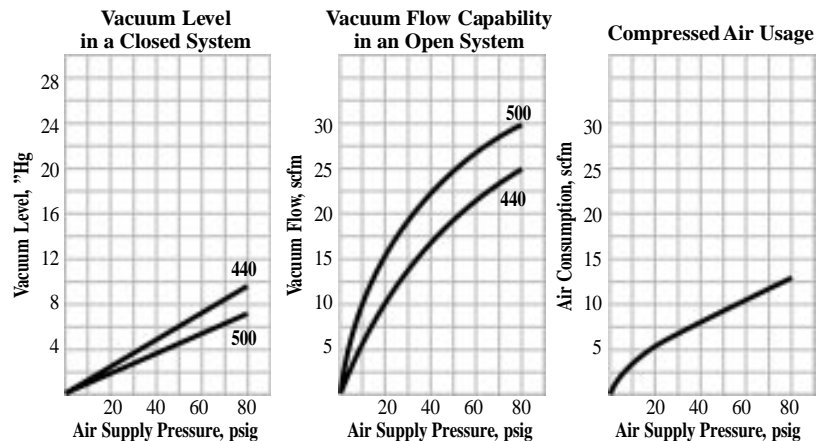
Time in Seconds to Evacuate a Volume of 1 Cubic Foot								
"Hg	1.5	3	6	9	12	15		
AVD440M	.1	.2	.5	.8	1.2	2.1		
AVD500M	.1	.2	.4	.8	1.3	3.5		

Vacuum Flow Rate, scfm vs. Vacuum Level, "Hg								
"Hg	0	1.5	3	6	9	12	15	
AVD440M	25.0	20.7	18.8	16.3	12.4	9.4	4.4	
AVD500M	29.0	24.4	21.1	13.2	10.1	7.9	1.0	

## "L" Version

Produces low vacuum levels and vacuum flow rates up to 28.5 scfm, *but with substantially lower levels of air consumption than the "M" versions.*

Model Number	AVD440L	AVD500L
Vacuum Level, "Hg	9.8	7.5
Vacuum Flow, scfm	23.5	28.5
Air Consumption, scfm	10.9	10.9
Weight, oz.	8	8
Sound Level, dBA	89	90



Time in Seconds to Evacuate a Volume of 1 Cubic Foot								
"Hg	1.5	3	6	9				
AVD440L	.1	.2	.6	1.3				
AVD500L	.1	.2	.7					

Vacuum Flow Rate, scfm vs. Vacuum Level, "Hg								
"Hg	0	1.5	3	6	9			
AVD440L	23.5	19.0	16.5	9.9	2.0			
AVD500L	28.5	20.2	16.7	6.8				

• Sound levels recorded with mufflers, see page 24.  
 • Materials of construction: anodized aluminum - other materials available.

• Operating temperature (degrees): 0 to 400 F  
 • All data recorded at 70-75 psig air supply.