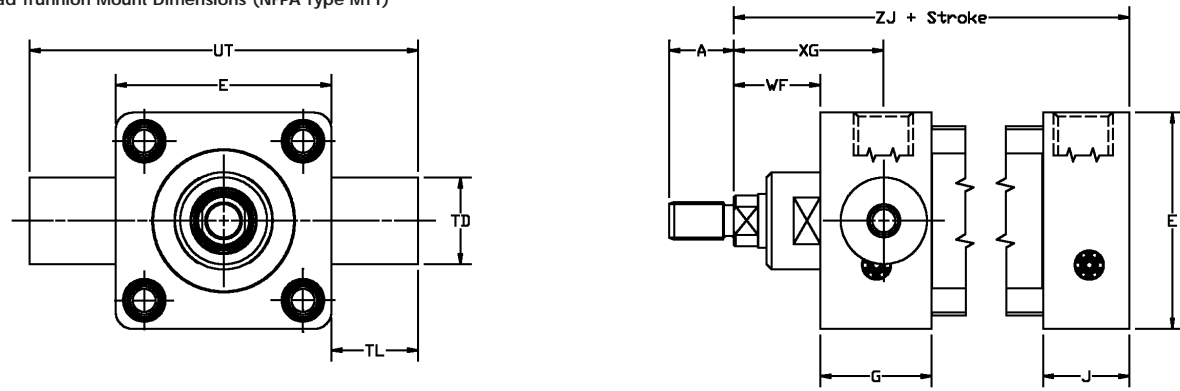


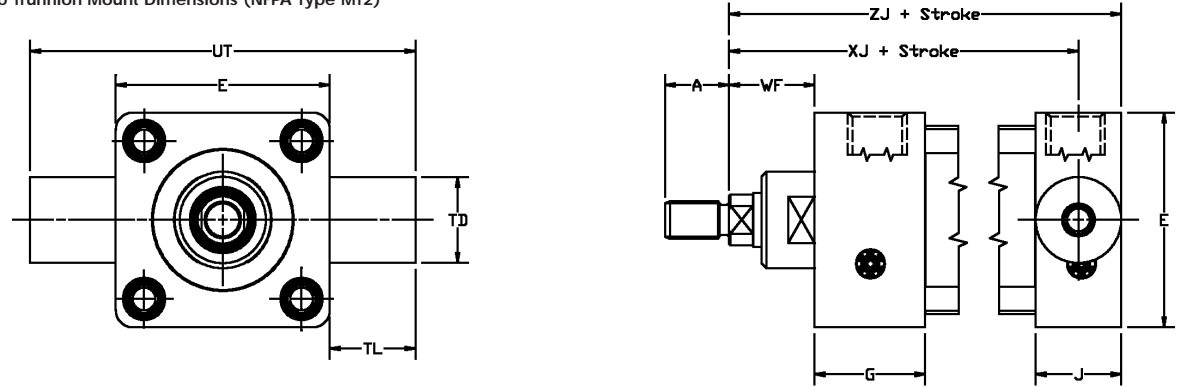
Head Trunnion Mount Dimensions (NFPA Type MT1)



Note: When the trunnion is mounted, the Cushion Adjustment Screw is not accessible.

Part Number	Bore	Rod Dia.	A	E	G	J	TD	TL	UT	WF	XG	ZJ+*
TH-71-1.5	1.5	5/8	3/4	2	1 1/2	1	1	1	3	1	1 3/4	4 5/8
TH-71-2	2	5/8	3/4	2 1/2	1 1/2	1	1	1	3 1/2	1	1 3/4	4 5/8
TH-71-2.5	2.5	5/8	3/4	3	1 1/2	1	1	1	4	1	1 3/4	4 3/4
TH-71-3.25	3.25	1	1 1/8	3 3/4	1 3/4	1 1/4	1	1	4 3/4	1 3/8	2 1/4	5 5/8
TH-71-4	4	1 3/8	1 1/8	4 1/2	1 3/4	1 1/4	1	1	5 1/2	1 3/8	2 1/4	5 7/8
TH-71-5	5	1 3/8	1 1/8	5 1/2	1 3/4	1 1/4	1	1	6 1/2	1 3/8	2 1/4	5 7/8

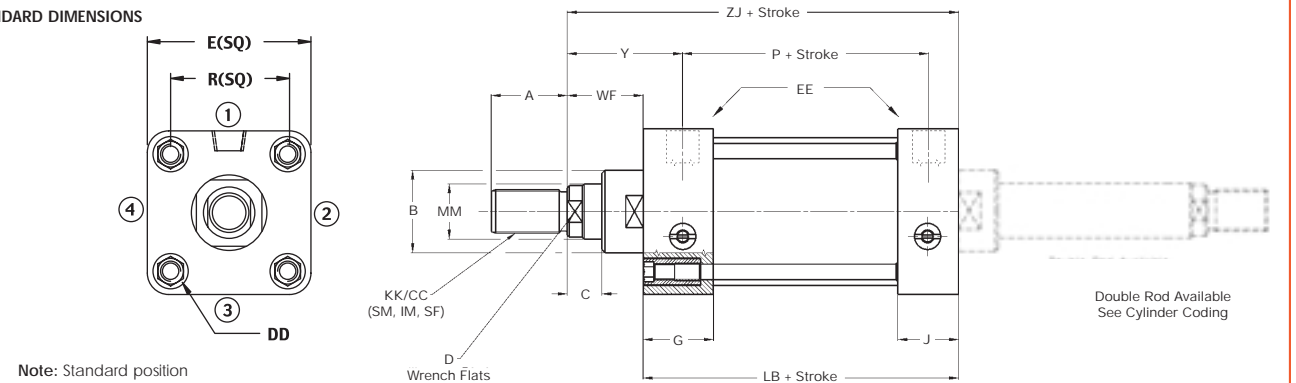
Cap Trunnion Mount Dimensions (NFPA Type MT2)



Note: When the trunnion is mounted, the Cushion Adjustment Screw is not accessible.

Part Number	Bore	Rod Dia.	A	E	G	J	TD	TL	UT	WF	XJ+*	ZJ+*
TC-71-1.5	1.5	5/8	3/4	2	1 1/2	1	1	1	3	1	4 1/8	4 5/8
TC-71-2	2	5/8	3/4	2 1/2	1 1/2	1	1	1	3 1/2	1	4 1/4	4 5/8
TC-71-2.5	2.5	5/8	3/4	3	1 1/2	1	1	1	4	1	4 1/4	4 5/8
TC-71-3.25	3.25	1	1 1/8	3 3/4	1 3/4	1 1/4	1	1	4 3/4	1 3/8	5	5 5/8
TC-71-4	4	1 3/8	1 1/8	4 1/2	1 3/4	1 1/4	1	1	5 1/2	1 3/8	5 1/4	5 7/8
TC-71-5	5	1 3/8	1 1/8	5 1/2	1 3/4	1 1/4	1	1	6 1/2	1 3/8	5 1/4	5 7/8

STANDARD DIMENSIONS



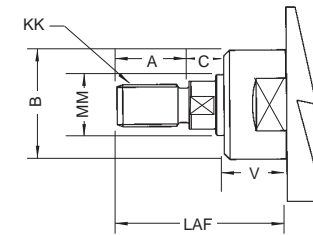
Note: Standard position of Port is 1, while that of Cushion Valve is 2.

Note: Cushion adjustment is always 90° clockwise from port.

BORE	Rod Ø	Small Male SM Style 1	Inter. Male IM Style 2	Short Female SF Style 3	A	B	C	D	DD	E	EE	G	J	LB+	P+	R	WF	Y	ZJ+
1.5	0.625	7/16-20	1/2-20	7/16-20	3/4	1.125	3/8	1/2	1/4-28	2.00	3/8	1.50	1.00	3 5/8	2.520	1.43	1	1.79	4 5/8
2	0.625	7/16-20	1/2-20	7/16-20	3/4	1.125	3/8	1/2	5/16-24	2.5	3/8	1.50	1.00	3 5/8	2.520	1.84	1	1.79	4 5/8
2	1.000	3/4-16	7/8-14	3/4-16	1 1/8	1.500	5/8	7/8	5/16-24	2.5	3/8	1.50	1.00	3 5/8	2.520	1.84	1 3/8	2.15	5
2.5	0.625	7/16-20	1/2-20	7/16-20	3/4	1.125	3/8	1/2	5/16-24	3.00	3/8	1.50	1.00	3 3/4	2.650	2.19	1	1.75	4 3/4
2.5	1.000	3/4-16	7/8-14	3/4-16	1 1/8	1.500	5/8	7/8	5/16-24	3.00	3/8	1.50	1.00	3 3/4	2.650	2.19	1 3/8	2.15	5 1/8
3.25	1.000	3/4-16	7/8-14	3/4-16	1 1/8	1.500	5/8	7/8	3/8-24	3.75	1/2	1.750	1.250	4 1/4	2.920	2.76	1 3/8	2.33	5 5/8
3.25	1.375	1-14	1 1/4-12	1-14	1 5/8	2.000	7/8	1 1/8	3/8-24	3.75	1/2	1.750	1.250	4 1/4	2.920	2.76	1 5/8	2.49	5 7/8
4	1.000	3/4-16	7/8-14	3/4-16	1 1/8	1.500	5/8	7/8	3/8-24	4.5	1/2	1.750	1.250	4 1/4	2.920	3.32	1 3/8	2.49	5 5/8
4	1.375	1-14	1 1/4-12	1-14	1 5/8	2.000	7/8	1 1/8	3/8-24	4.5	1/2	1.750	1.250	4 1/4	2.920	3.32	1 5/8	2.49	5 7/8
5	1.000	3/4-16	7/8-14	3/4-16	1 1/8	1.500	5/8	7/8	1/2-20	5.5	1/2	1.750	1.250	4 1/2	3.170	4.10	1 3/8	2.26	5 7/8
5	1.375	1-14	1 1/4-12	1-14	1 5/8	2.000	7/8	1 1/8	1/2-20	5.5	1/2	1.750	1.250	4 1/2	3.170	4.10	1 5/8	2.26	6 1/8

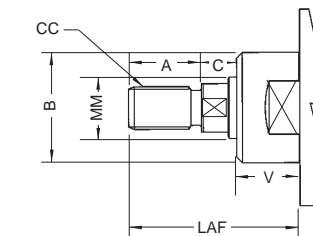
NFPA standard rod types

Male Rod Thread Dimensions - Small Male, (Type SM) Style 1



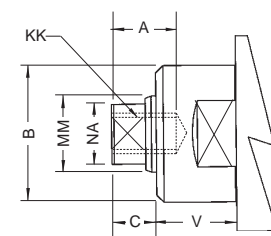
BORE	Rod Diam	MM	KK	A	B	C	V	LAF
1.5	5/8	7/16-20	3/4	1.125	3/8	5/8	1 3/4	
2	5/8	7/16-20	3/4	1.125	3/8	5/8	1 3/4	
2	1	3/4-16	1 1/8	1.500	5/8	3/4	2 1/2	
2.5	5/8	7/16-20	3/4	1.125	3/8	5/8	1 3/4	
2.5	1	3/4-16	1 1/8	1.500	5/8	3/4	2 1/2	
3.25	1	3/4-16	1 1/8	1.500	5/8	3/4	2 1/2	
3.25	1 3/8	1-14	1 5/8	2.000	7/8	3/4	3 1/4	
4	1	3/4-16	1 1/8	1.500	5/8	3/4	2 1/2	
4	1 3/8	1-14	1 5/8	2.000	7/8	3/4	3 1/4	
5	1	3/4-16	1 1/8	1.500	5/8	3/4	2 1/2	
5	1 3/8	1-14	1 5/8	2.000	7/8	3/4	3 1/4	

Male Rod Thread Dimensions - Intermediate Male, (Type IM) Style 2

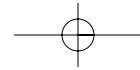


BORE	Rod Diam	MM	CC	A	B	C	V	LAF
1.5	5/8	1/2-20	3/4	1.125	3/8	5/8	1 3/4	
2	5/8	1/2-20	3/4	1.125	3/8	5/8	1 3/4	
2	1	7/8-14	1 1/8	1.500	5/8	3/4	2 1/2	
2.5	5/8	1/2-20	3/4	1.125	3/8	5/8	1 3/4	
2.5	1	7/8-14	1 1/8	1.500	5/8	3/4	2 1/2	
3.25	1	7/8-14	1 1/8	1.500	5/8	3/4	2 1/2	
3.25	1 3/8	1 1/4-12	1 5/8	2.000	7/8	3/4	3 1/4	
4	1	7/8-14	1 1/8	1.500	5/8	3/4	2 1/2	
4	1 3/8	1 1/4-12	1 5/8	2.000	7/8	3/4	3 1/4	
5	1	7/8-14	1 1/8	1.500	5/8	3/4	2 1/2	
5	1 3/8	1 1/4-12	1 5/8	2.000	7/8	3/4	3 1/4	

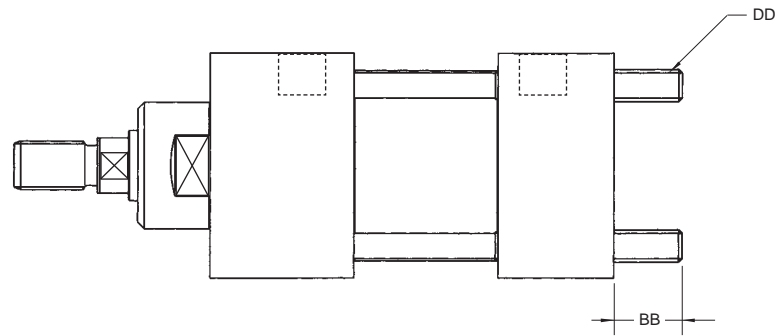
Female Rod Thread Dimensions - Short Female, (Type SF) Style 3



BORE	Rod Diam	MM	KK	A	B	C	NA	V
1.5	5/8	7/16-20	3/4	1.125	3/8	.59	5/8	
2	5/8	7/16-20	3/4	1.125	3/8	.59	5/8	
2	1	3/4-16	1 1/8	1.500	5/8	.94	3/4	
2.5	5/8	7/16-20	3/4	1.125	3/8	.59	5/8	
2.5	1	3/4-16	1 1/8	1.500	5/8	.94	3/4	
3.25	1	3/4-16	1 1/8	1.500	5/8	.94	3/4	
3.25	1 3/8	1-14	1 5/8	2.000	7/8	1.34	3/4	
4	1	3/4-16	1 1/8	1.500	5/8	.94	3/4	
4	1 3/8	1-14	1 5/8	2.000	7/8	1.34	3/4	
5	1	3/4-16	1 1/8	1.500	5/8	.94	3/4	
5	1 3/8	1-14	1 5/8	2.000	7/8	1.34	3/4	

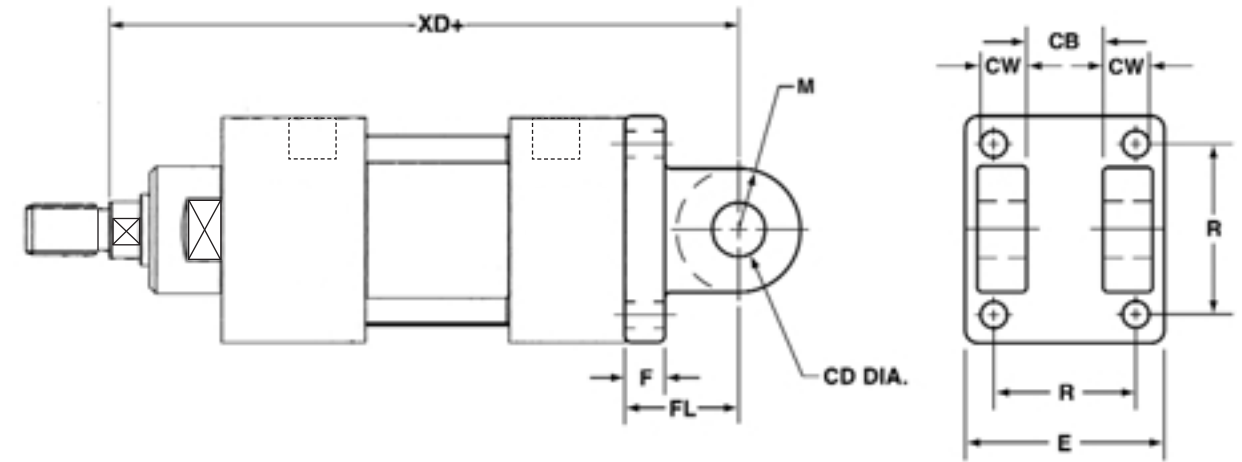


Tie-Rod Extended Cap End (NFPA Type MX2 Mount)



Code Key Description	Bore	Rod Dia.	BB	DD
XC	1.5	5/8	1	1/4-28
XC	2	5/8	1 1/8	5/16-24
	2	1	1 1/8	5/16-24
XC	2.5	5/8	1 1/8	5/16-24
	2.5	1	1 1/8	5/16-24
XC	3.25	1	1 3/8	3/8-24
	3.25	1 3/8	1 3/8	3/8-24
XC	4	1	1 3/8	3/8-24
	4	1 3/8	1 3/8	3/8-24
XC	5	1	1 13/16	1/2-20
	5	1 3/8	1 13/16	1/2-20

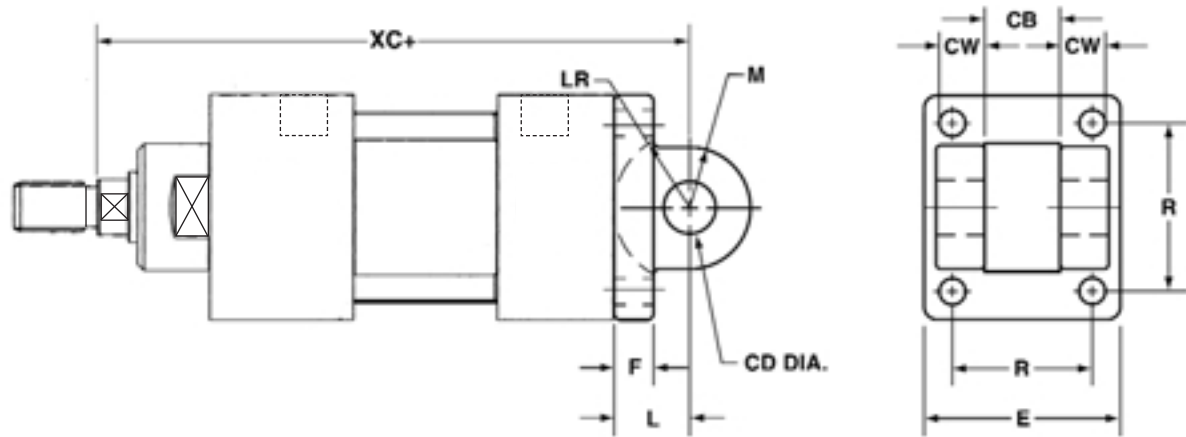
Cap Female Detachable Clevis (NFPA Type MP2 Mount) *(+ stroke)



PART NUMBER	BORE	ROD DIA.	FL	F	R	E	CW	M	CB	CD	XD+
CD-71-1.5	1.5	5/8	1 1/8	.38	1.43	2	.50	.62	0.76	0.502	5 3/4
CD-71-2	2	5/8	1 1/8	.38	1.84	2 1/2	.50	.62	0.76	0.502	6 1/8
	2	1	1 1/8	.38	1.84	2 1/2	.50	.62	0.76	0.502	6 1/8
CD-71-2.5	2.5	5/8	1 1/8	.38	2.19	3	.50	.62	0.76	0.502	5 7/8
	2.5	1	1 1/8	.38	2.19	3	.50	.62	0.76	0.502	6 1/4
CD-71-3.25	3.25	1	1 7/8	.63	2.76	3 3/4	.62	.87	1.26	0.752	7 1/2
	3.25	1 3/8	1 7/8	.63	2.76	3 3/4	.62	.87	1.26	0.752	7 3/4
CD-71-4	4	1	1 7/8	.63	3.32	4 1/2	.62	.87	1.26	0.752	7 1/2
	4	1 3/8	1 7/8	.63	3.32	4 1/2	.62	.87	1.26	0.752	7 3/4
CD-71-5	5	1	1 7/8	.63	4.10	5 1/2	.62	.87	1.26	0.752	7 3/4
	5	1 3/8	1 7/8	.63	4.10	5 1/2	.62	.87	1.26	0.752	8.00

Clevis Pin provided with Pivot Mount

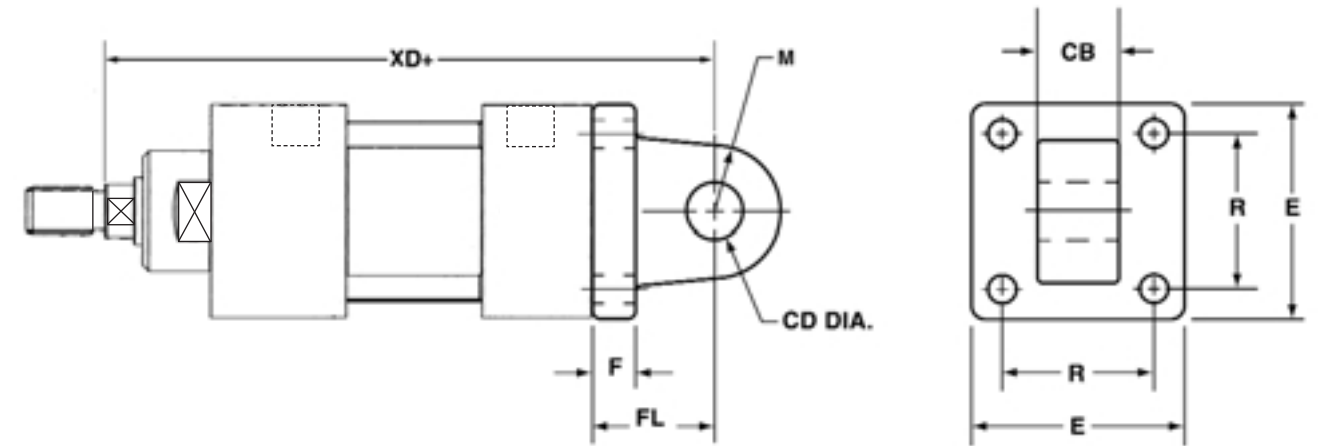
Cap Female Fixed Clevis (NFPA Type MP1 Mount) *(+ stroke)



Part Number	Bore	Rod Dia.	L	F	R	E	CW	M	CB	CD	LR	XC+*
CF-71-1.5	1.5	5/8	3/4	.38	1.43	2	.50	.62	0.76	0.502	0.62	5 3/8
CF-71-2	2	5/8	3/4	.38	1.84	2 1/2	.50	.62	0.76	0.502	0.62	5 3/8
	2	1	3/4	.38	1.84	2 1/2	.50	.62	0.76	0.502	0.62	5 3/4
CF-71-2.5	2.5	5/8	3/4	.38	2.19	3	.50	.62	0.76	0.502	0.62	5 1/2
	2.5	1	3/4	.38	2.19	3	.50	.62	0.76	0.502	0.62	5 7/8
CF-71-3.25	3.25	1	1 1/4	.63	2.76	3 3/4	.62	.87	1.26	0.752	0.87	6 7/8
	3.25	1 3/8	1 1/4	.63	2.76	3 3/4	.62	.87	1.26	0.752	0.87	7 1/8
CF-71-4	4	1	1 1/4	.63	3.32	4 1/2	.62	.87	1.26	0.752	0.87	6 7/8
	4	1 3/8	1 1/4	.63	3.32	4 1/2	.62	.87	1.26	0.752	0.87	7 1/8
CF-71-5	5	1	1 1/4	.63	4.10	5 1/2	.62	.87	1.26	0.752	0.87	7 1/8
	5	1 3/8	1 1/4	.63	4.10	5 1/2	.62	.87	1.26	0.752	0.87	7 3/8

Clevis Pin provided with Pivot Mount

Cap Male Detachable Clevis (NFPA Type MP4 Mount) *(+ stroke)



Part Number	Bore	Rod Dia.	FL	F	R	E	M	CB	CD	XD+*
L-71-1.5	1.5	5/8	1 1/8	.38	1.43	2	.62	0.75	0.502	5 3/4
L-71-2	2	5/8	1 1/8	.38	1.84	2 1/2	.62	0.75	0.502	5 3/4
	2	1	1 1/8	.38	1.84	2 1/2	.62	0.75	0.502	6 1/8
L-71-2.5	2.5	5/8	1 1/8	.38	2.19	3	.62	0.75	0.502	5 7/8
	2.5	1	1 1/8	.38	2.19	3	.62	0.75	0.502	6 1/4
L-71-3.25	3.25	1	1 7/8	.63	2.76	3 3/4	.87	1.25	0.752	7 1/2
	3.25	1 3/8	1 7/8	.63	2.76	3 3/4	.87	1.25	0.752	7 3/4
L-71-4	4	1	1 7/8	.63	3.32	4 1/2	.87	1.25	0.752	7 1/2
	4	1 3/8	1 7/8	.63	3.32	4 1/2	.87	1.25	0.752	7 3/4

