

# Aftermarket

for OEM's, Operators, Passengers and Maintenance Crews.

## Drop-In Replacement

- Direct competitor interchange
- Part number cross-reference list available
- Lightweight, increased payload capacity

## Availability

- Shortest industry lead times
- Safety stock programs
- Complete standard product portfolio

## Performance

- Zero maintenance
- Lowest industry backlash
- Full product offerings

## Service

- Worldwide sales and service locations
- AOG support program
- Off-the-shelf availability



**Enidine Aerospace**  
7 Centre Drive  
Orchard Park, New York 14127 • USA  
Phone: 716-662-1900  
Fax: 716-667-1385  
www.enidine.com

**Enidine GmbH**  
Rheinauenstr. 5  
79415 Bad Bellingen  
Rheinweiler • Germany  
Phone: 49 7635 8101 0  
Fax: 49 7635 8101 99  
www.enidine.de

**Enidine Co. Ltd.**  
398, Chigasaki-Cho, Tsuzuki-Ku  
Yokohama-Shi, Kanagawa 224-0031  
Japan  
Phone: 81 45 947 1671  
Fax: 81 45 945 3967  
www.enidine.co.jp



# UltraLOC™ Seat Recline System



### ENIDINE AEROSPACE PRODUCTS

UltraLOC™ Seat Recline Controls • Stow Bin Actuators/Rate Controls • Interior Noise Isolators  
Energy Absorption Devices • Rotary Actuators/Dampers  
Wire Rope/Compact Wire Rope Isolators • APU Isolators



# OEM Market

UltraLOC™ Seat Recline System – “The Best Choice!”

## Value

- Competitively priced
- Lowest cost of ownership
- Value added engineering support

## Reliable

- Longest service life expectancy
- Superior ultimate load design
- Extended warranty period

## User-Friendly

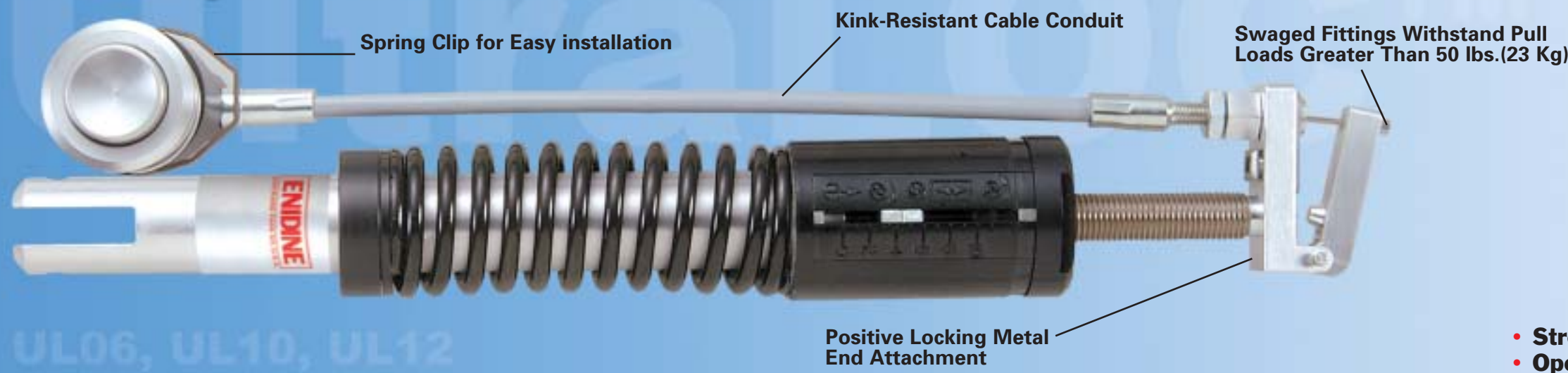
- Easy-to-install – QuikLOC option
- Stroke adjustment without tools
- Tamperproof “lockout” feature

## Safety

- 16-g tested and approved
- Egress override feature
- Enhanced seat structural integrity



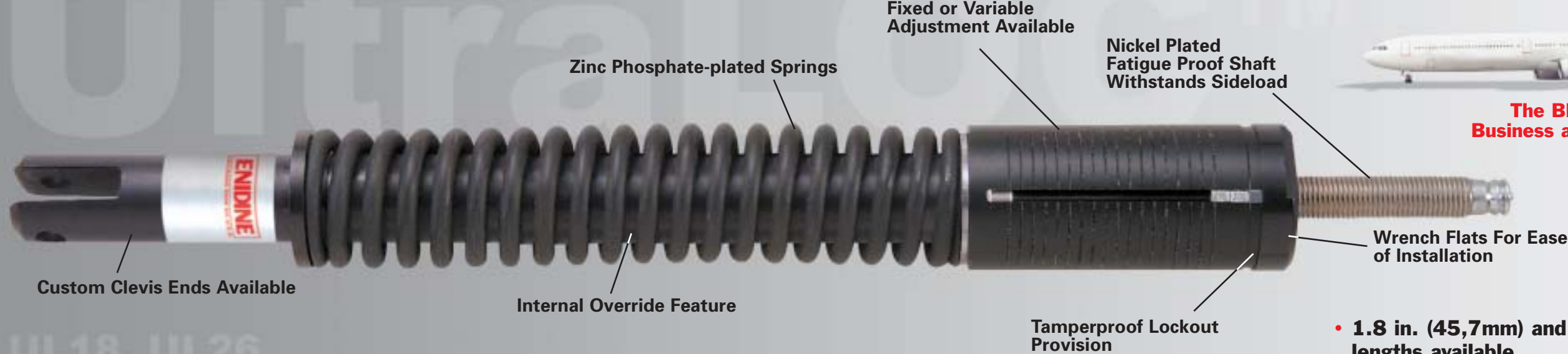
## Economy Class UltraLOC™



The BEST CHOICE for Economy Class seats

- Stroke lengths available up to 1.12 in. (28,5mm)
- Operational life expectancy 250,000 cycles

## Premium Class UltraLOC™



The BEST CHOICE for Business and First-Class seats

- 1.8 in. (45,7mm) and 2.6 in. (66mm) stroke lengths available
- Operational life expectancy 200,000 cycles

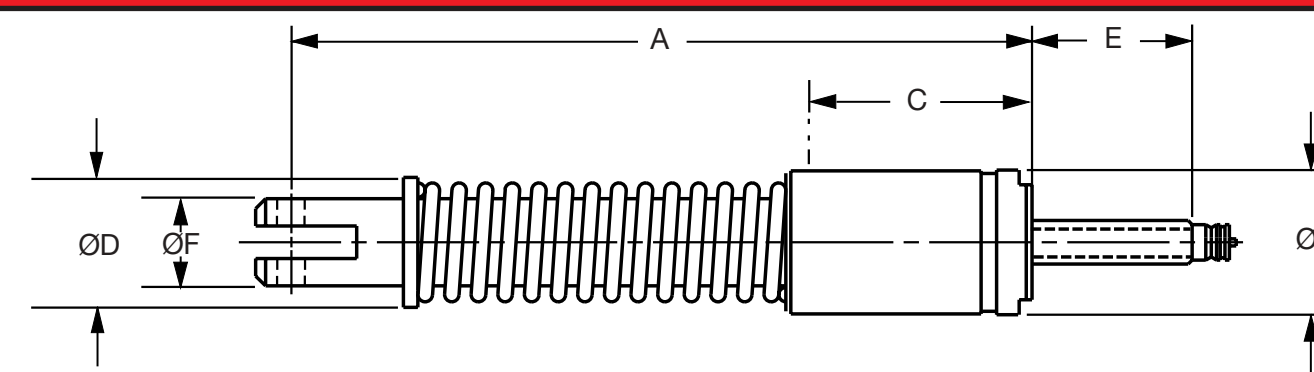
## Executive Class UltraLOC™



The BEST CHOICE for Executive Aircraft seats

- 3.2 in. (81,3mm) and 3.7 in. (94mm) stroke lengths available
- Operational life expectancy 100,000 cycles

## UltraLOC™ Engineering Data



### Technical Specifications\*

DIMENSIONS		SPRING FORCE		FORCE/LOAD			
Minimum Extended A	Maximum Extended A	Diameter	Stroke	Diameter	Dimension	Diameter	Dimension
E	F	D	C	B	A	F	E
Minimum Preload	Maximum Preload	Minimum Endload	Maximum Endload	Override Force	Ultimate Tensile Load	Ultimate Compressive Load	Force Required to Unlock

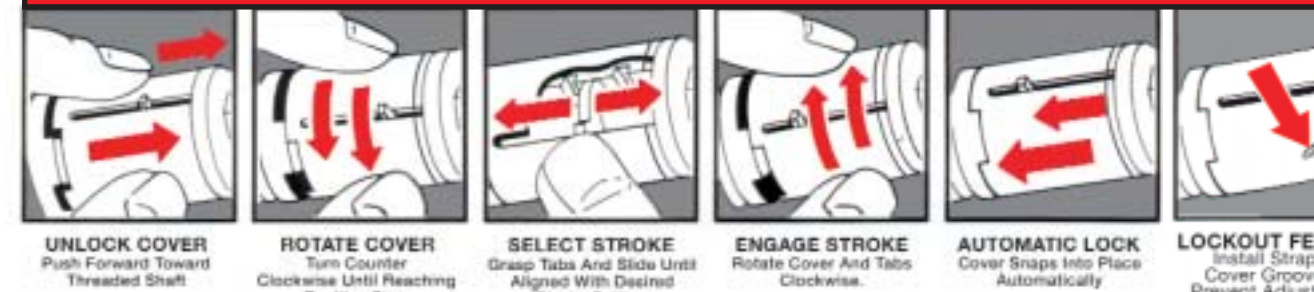
UltraLOC™ Model	Dimensions in inches (mm).						Dimensions in pounds (N).					
Economy Class												
<b>UL06</b>	6.38	12.00	1.25	1.12	1.13	1.38	.75	80	125	120	200	70
<b>UL10</b>	(162.1)	(304.8)	(31.8)	(28.7)	(28.7)	(35.1)	(19.1)	(356)	(556)	(534)	(890)	(312)
<b>UL12</b>												
Premium Class												
<b>UL18</b>	8.40	14.00	1.25	1.80	1.13	1.50	.75	80	125	120	200	70
	(213.4)	(355.6)	(31.8)	(45.7)	(28.7)	(38.1)	(19.1)	(356)	(556)	(534)	(890)	(312)
<b>UL26</b>	10.80	14.00	1.25	2.60	1.13	1.50	.75	80	125	220	70	3,200
	(274.3)	(355.6)	(31.8)	(66.0)	(28.7)	(38.1)	(19.1)	(356)	(556)	(534)	(890)	(14 240)
Executive Class												
<b>UL32</b>	11.90	14.00	1.47	3.20	1.38	1.20	.75	95	-	140	-	60
	(302.3)	(355.6)	(37.3)	(81.0)	(35.1)	(30.5)	(19.1)	(423)	-	(623)	-	(267)
<b>UL37</b>	13.50	16.00	1.75	3.70	1.75	1.20	.75	145	-	220	-	60
	(342.9)	(406.4)	(44.5)	(94.5)	(44.5)	(30.5)	(19.1)	(645)	-	(979)	-	(35 600)

### RECOMMENDED TEMPERATURE RANGES

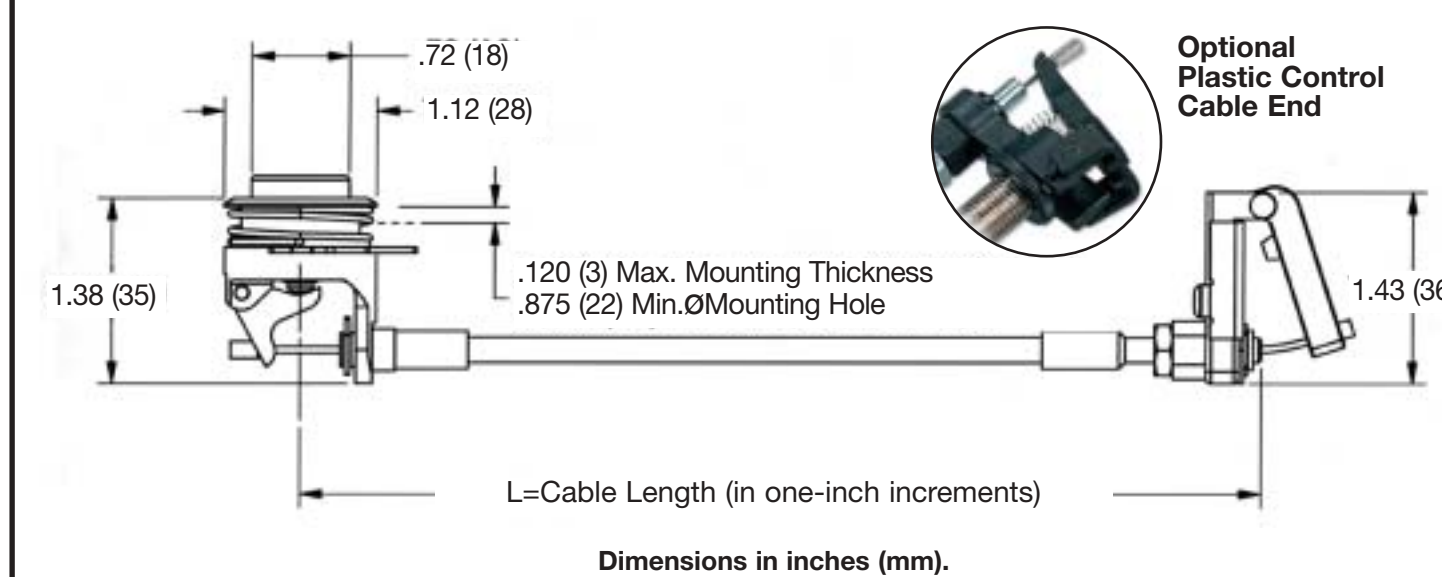
Operating	Non-Operating	Storage
40 to 130°F (5 to 55°C)	0 to 140°F (-18 to 60°C)	-40 to 180°F (-40 to 82°C)

\* Custom designs available to suit any application need.

### Patented Stroke Adjustment



## Control Cables



Dimensions in inches (mm).

## UltraLOC™ Accessories/Options



Custom design options available to suit any application need