



Threaded Body Cylinders

Snap-Cap® Design

TB Series

8mm, 12mm, & 16mm Bore

First Angle Projection	Single Acting and Spring Return
Fitting: 10-32 inch thread will fit and function in M5 port.	

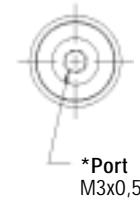
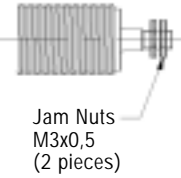
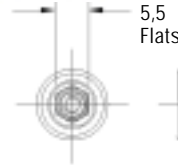
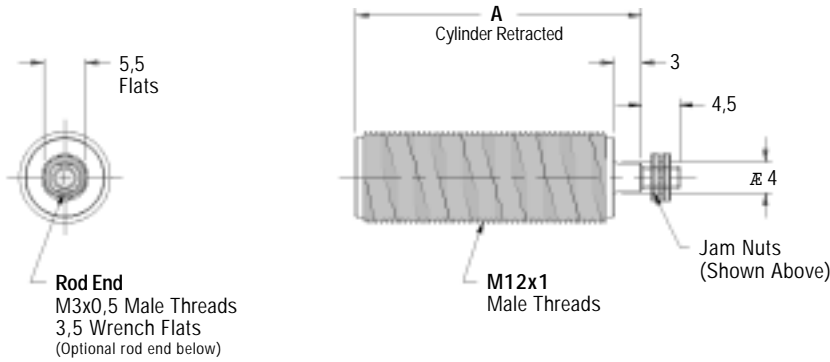
8mm Bore

Part Number	Stock Stroke Length	A
TB8x__	2,5 5	36
TB8x__	7,5 10 12,5 15 17,5 20	46

*Optional Porting:
M5x0,8 x 5Dp
Specify suffix M5
(see fitting note above)

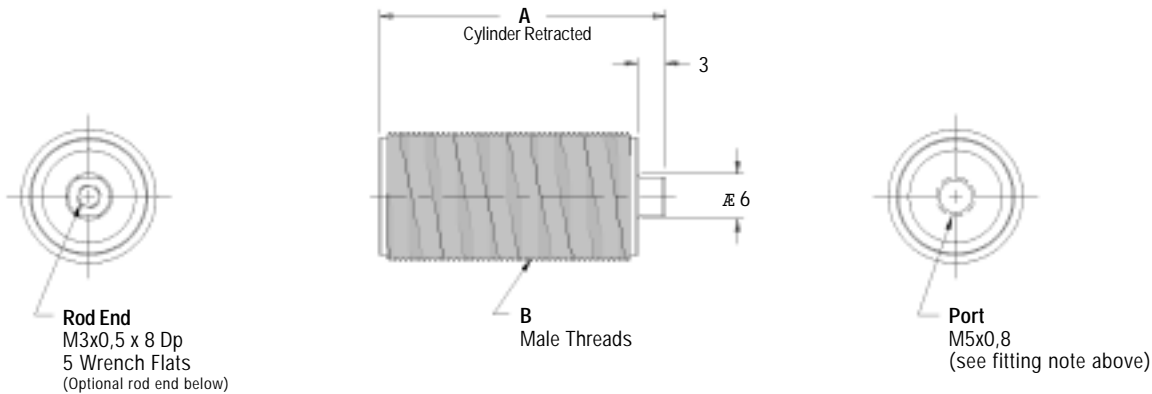


Jam Nuts: Standard on 8mm bore cylinders only



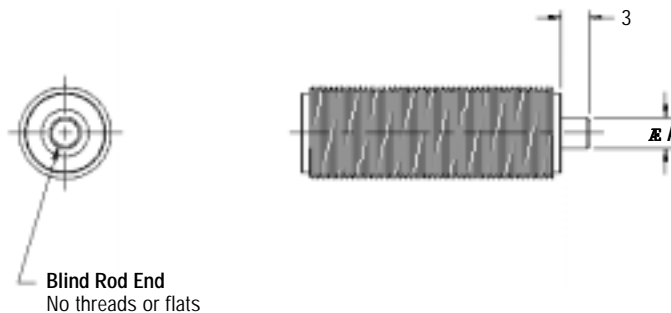
12mm and 16mm Bore

	Part Number	Stock Stroke Length	A	B
12mm	TB12x__	2,5 5 7,5 10	39	M17x1
	TB12x__	12,5 15 17,5 20 22,5 25	64	M17x1
16mm	TB16x__	2,5 5 7,5 10 12,5 15	50	M22x1
	TB16x__	17,5 20 22,5 25	65	M22x1



Optional Blind Rod End

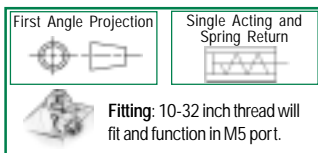
Bore	A
8	4
12	6
16	6



BE

 Ordering Suffix BE

Modifications Welcome!



Snap-Cap® Design

8mm, 12mm, & 16mm Bore

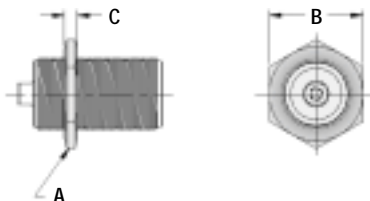
Threaded Body Accessories

TB Series



Jam Nut (1 each) *Sold Separately*

Bore	A	B	C	Torque (Recommended Value)		Part Number
				Lb-Ft	N-M	
8	M12x1	15	2,0-2,5	5.0	6,8	JNM12
12	M17x1	23	2,5-3,0	6.3	8,5	JNM17
16	M22x1	27	2,5-3,0	7.5	10,2	JNM22



1 Jam Nut

JNM__

Specify 12, 17, 22

Ordering Suffix JNM__
Material Zinc Plated Steel



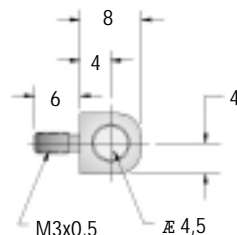
Jam nut fits on cylinder body, not rod end

Rod Eye

12mm & 16mm bore only



Rod eye screws flush with cylinder rod face (Factory Installed)

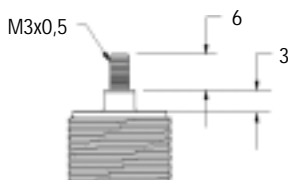


RE

Ordering Suffix RE
Bore 12mm & 16mm only
Pressure Rating 5 BAR
Material Steel black oxide with sintered bronze bearing

Studded Male Rod End

12mm & 16mm bore only



Stud permanently adhered

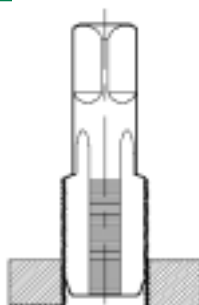
MS

Ordering Suffix MS
Bore 12mm & 16mm
Material Steel black oxide

Metric Tap *Sold Separately*

High speed steel, 4 flute bottom tap

Bore	Body Thread	Part Number
8	M12x1	TBTAPM12
12	M17x1	TBTAPM17
16	M22x1	TBTAPM22



TBTAPM__

Specify 12, 17, 22

Part Number TBTAPM__
Material High speed steel

Technical Reference

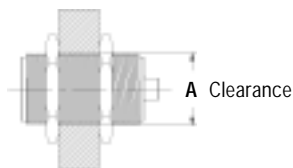
Cylinder Ratings

Pneumatic:
8.5 BAR (125 PSI) Maximum

Seal:
Buna-N (-18° - 93°C)

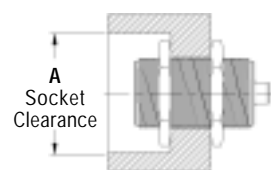
Drop Thru Clearance

Bore	A
8	12,5
12	17,5
16	22,5



Socket Clearance

Bore	A	Socket or Open-end Wrench Size	
		Metric	Inch
8	29	15mm	9/16"
12	39	23mm	7/8"
16	42	27mm	1-1/16"



TB12

X

2,5

RE

COMPACT® Threaded Body Cylinders

Part Number

Stroke

Option - See 'Accessories' section