

In the following parts list, assemblies are printed in capital letters. Parts that are included with an assembly are listed and indented directly beneath it. When an assembly is ordered, the assembly and all parts indented beneath it are included in the shipment.

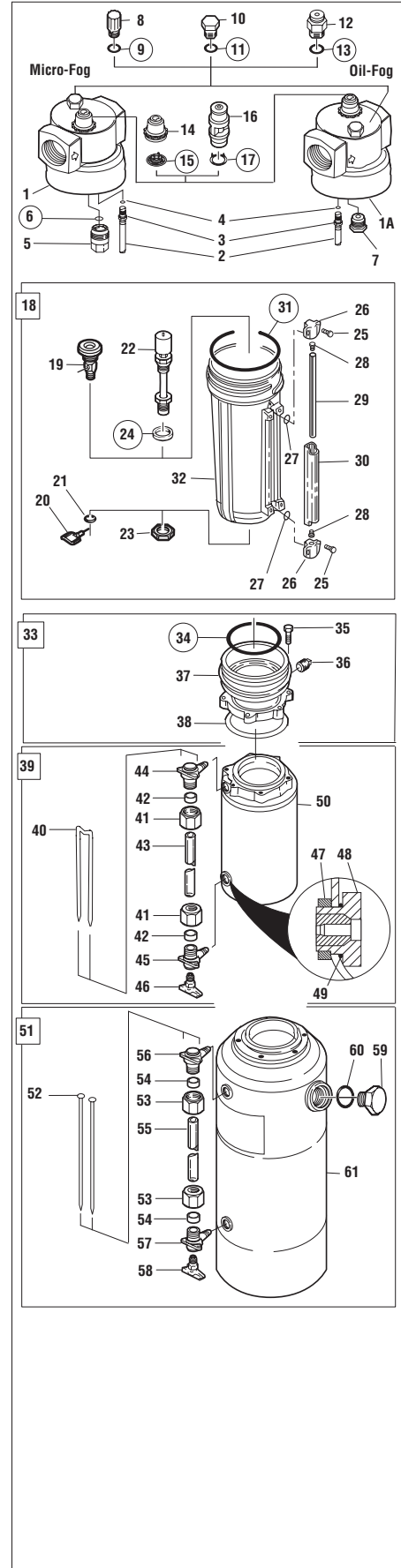
When an assembly lists a letter code in the **USED ON** column, parts that list the same letter code are used in that assembly. Parts coded **A** are used in the Assembly coded **A**, parts coded **B** are used in the Assembly coded **B**, etc.

ITEM	DESCRIPTION	PART NO.	QTY	USED ON
1	Body, Micro-Fog ModelNot normally replaced	1	
1A	Body, Oil-Fog ModelNot normally replaced	1	
2	Siphon Tube - Trim to length specified	3435-17	1	
	1 litre (1 qt U.S.) reservoir 187,3 mm (7.38")			
	2 litre (2 qt U.S.) reservoir: 250,8 mm (9.88")			
	8 litre (2 gal U.S.) reservoir: 368,3 mm (14.50")			
	20 litre (5 gal U.S.) reservoir: 415,9 mm (16.38")			
3	Fitting, siphon tube	5318-89	1	
4	Ball, check	2386-04	1	
5	Fog generator (Micro-Fog only)	5496-50	1	
6	O-ring (Micro-Fog only) (L17 service kit item)	421-01	1	
7	Check valve (Oil-fog, uni-directional only) *	999-52	1	
	Diffusion plug (Oil-fog, bi-directional only) *	999-02	1	
8	FILL PLUG ASSY, plastic	5301-51	1	
9	● O-Ring (L17 service kit item)	104-01	1	
10	FILL PLUG ASSY, aluminum	5301-50	1	
11	● O-ring (L17 service kit item)	104-01	1	
12	QUICK FILL CAP ASSY	18-011-021	1	
13	● O-ring (L17 service kit item)	104-01	1	
14	RED SIGHT FEED DOME ASSY, Plastic (Micro-fog only)	4055-50	1	
	GREEN SIGHT FEED DOME ASSY, Plastic (Oil-fog only)	4055-51	1	
15	● Seal (L17 service kit item)	4052-89	1	
16	SIGHT FEED DOME ASSY, Pyrex	5605-50	1	
17	● Seal (L17 service kit item)	5769-89	1	
18	RESERVOIR ASSY, 1 litre (1 qt), sight glass, 1/4 turn manual drain	5390-45	1	A
	RESERVOIR ASSY, 1 litre (1 qt), sight glass, remote fill device	5390-21	1	B
19	● MANUAL DRAIN ASSY, 1/4 turn	619-50	1	A
20	● Valve, drain	617-89	1	A
21	● O-ring	2317-05	1	A
22	● REMOTE FILL ASSY	5335-52	1	B
23	● Nut	2797-89	1	B
24	● Gasket (L17 service kit item)	2811-01	1	B
25	● Screw (2273-22 service kit item)	9P06-10	4	AB
26	● Bracket, sight glass	3778-89	2	AB
27	● O-ring (2273-22 service kit item)	706-01	2	AB
28	● Seal, sight glass lens (2273-22 service kit item)	5873-83	2	AB
29	● Lens, sight glass (2273-22 service kit item)	5872-03	1	AB
30	● Guard, sight glass (2273-22 service kit item)	1218-89	1	AB
31	● O-ring (2273-22 service kit item) (L17 service kit item)	2306-53	1	AB
32	● ReservoirNot normally replaced	1	AB
33	RESERVOIR ADAPTER ASSY, used with items 39 and 51	5500-50	1	
34	● O-ring (L17 service kit item)	2306-53	1	
35	● Screw	3378-06	6	
36	● Plug, pipe	52-01	2	
37	● Adapter	5500-01	1	
38	● Gasket	2841-39	1	
39	RESERVOIR ASSY, 2 litre (2 qt U.S.)	648-28	1	
40	● Guard (2273-04 service kit item)	1778-03	1	
41	● Nut, packing (2273-04 service kit item)	139-05	2	
42	● Packing (2273-04 service kit item)	1221-05	2	
43	● Glass, gage (2273-04 service kit item)	1215-05	1	
44	● Bracket, upper	2087-23	1	
45	● BRACKET ASSY, LOWER	2087-42	1	
46	● Petcock, drain	684-01	1	
47	● Nut, retaining †	2797-01	1	
48	● Insert †	1392-03	1	
49	● O-ring (2273-04 service kit item) †	2307-08	1	
50	● ReservoirNot normally replaced	1	
51	RESERVOIR ASSY, 8 litre (2 gal U.S.)	3416-01	1	
	RESERVOIR ASSY, 20 litre (5 gal U.S.)	3415-01	1	
52	● Guard (2274-01 service kit item)	1218-01	2	
53	● Nut, packing (2274-01 service kit item)	139-05	2	
54	● Packing (2274-01 service kit item)	1221-05	2	
55	● Glass, gage (2274-01 service kit item)	1215-06	1	
56	● Bracket, upper	2087-23	1	
57	● BRACKET ASSY, LOWER	2087-42	1	
58	● Petcock, drain	684-01	1	
59	● FILL PLUG ASSY	1207-02	1	
60	● Gasket, fill plug	1961-01	1	
61	● ReservoirNot normally replaced	1	

* Item 7 (check valve; diffusion plug) not used with 8 litre (2-gal U.S.) and 20 litre (5-gal U.S.) reservoirs.

† Current 2 litre (2 qt U.S.) reservoirs use items 47, 48, and 49 to mount the lower sight glass bracket.

Early 2 litre (2 qt U.S.) reservoirs used a tapped hole in the reservoir.



SERVICE KITS & ACCESSORIES

L17 service kit - includes items circled on exploded view	5771-02
Liquid level lens kit for 1 litre (1 qt U.S.) reservoirs Items 25, 27, 28, 29, 30, 31	2273-22
Liquid level lens kit for 2 litre (2 qt U.S.) reservoirs Items 40, 41, 42, 43, 49	2273-04
Liquid level lens kit for 8 litre (2 gal U.S.) and 20 litre (5 gal U.S.) reservoirs Items 52, 53, 54, 55	2274-01
Wall mounting kits	
1 and 2 litre (1 and 2 qt U.S.) reservoirs, 3/4" and 1" ported units	6212-50
1 and 2 litre (1 and 2 qt U.S.) reservoirs, 1-1/4" and 1-1/2" ported units	6212-51
8 litre (2 gal U.S.) reservoir	18-001-056
20 litre (5 gal U.S.) reservoir	18-001-039
Low oil level switch	
2 litre (2 qt U.S.) reservoir	18-023-612
8 litre (2 gal U.S.) reservoir	18-023-614
20 litre (5 gal U.S.) reservoir	18-023-616
High/Low oil level switch	
8 litre (2 gal U.S.) reservoir	18-023-656
20 litre (5 gal U.S.) reservoir	18-023-658

