

- > **Port size: 3/8" to 3/4"**
(PTF/ISO G)
- > **Excelon® Plus design**
allows in-line
installation or modular
installation with other
Excelon® Plus products
- > **3/2 way function**
- > **Threaded exhaust port**
- > **Lockable in closed**
position with padlock



Technical features

Medium:

Compressed air only

Maximum supply pressure:

290 psi (20 bar)

Port size:

G3/8, G1/2, G3/4,
3/8 PTF, 1/2 PTF, 3/4 PTF

Flow:

1/2": 343 scfm (162 dm³/s)
at 91 psi (6.3 bar) and Δp 7 psi
(0.5 bar) pressure drop,
3.8 scfm (1.8 dm³/s) from
OUT to exhaust port.

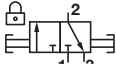
Ambient/Media temperature:

-4 to +149°F (-20 to +65°C)
Air supply must be dry enough
to avoid ice formation at
temperatures below +35°F (+2°C).

Materials:

Body: Die cast aluminum
Body covers: ABS
Elastomers: NBR
Valve: Brass

Technical data T84T - standard models

Symbol	Port PTF	Function	Valve type	Exhaust port forms	Weight lb (kg)	Model
	3/8	3/2	Ball valve	Exhaust port threaded PTF1/4	1.0 (0.48)	T84T-3AA-B1N
	1/2	3/2	Ball valve	Exhaust port threaded PTF1/4	1.0 (0.48)	T84T-4AA-B1N
	3/4	3/2	Ball valve	Exhaust port threaded PTF1/4	1.0 (0.48)	T84T-6AA-B1N

Option selector

T84T-★★A-B1N

Function	Substitute	Thread form	Substitute
3/2	T	PTF	A
		ISO G parallel	G
Port size	Substitute		
3/8"	3		
1/2"	4		
3/4"	6		

Accessories

Wall mounting bracket



Page 4

840024-50KIT

Quikclamp®



Page 4

840014-51KIT

Quikclamp®
with bracket assembled



Page 4

840014-52KIT

Pressure sensing block
1/4 PTF



Page 5

840016-50KIT

Pressure sensing block
G1/4



Page 5

840016-51KIT

Full flow porting block
3/4 PTF



Page 5

840028-68KIT

Full flow porting block
G3/4



Page 5

840028-69KIT

Full flow porting block
3/4 PTF



Page 5

840028-50KIT

Full flow porting block
G3/4



Page 5

840028-53KIT

Pressure switch interface
block (18D pressure switch)
G1/2



Page 6

033771700000000

Pneumatic pressure switch
18D (7 to 120 psi)



Page 6

088130000000000

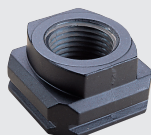
Digital pressure switch
51D (-14.5 to 145 psi)



Page 6

086081100000000

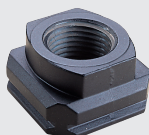
Port Adaptors
3/8 PTF



Page 5

840015-02KIT

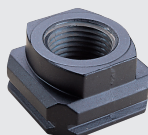
Port Adaptors
1/2 PTF



Page 5

840015-03KIT

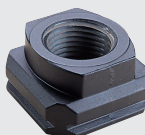
Port Adaptors
3/4 PTF



Page 5

840015-04KIT

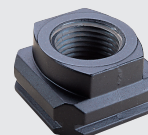
Port Adaptors
G3/8



Page 5

840015-10KIT

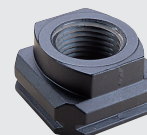
Port Adaptors
G1/2



Page 5

840015-11KIT

Port Adaptors
G3/4



Page 5

840015-12KIT

Padlock

Padlock



840055-01KIT

Lockout device



840055-02KIT

Silencer

Porous plastic silencer *3)
G1/4



M/S2

Plastic silencer *3)
1/4 NPT



C/S2

Sinter bronze silencer *3)
1/4 PTF

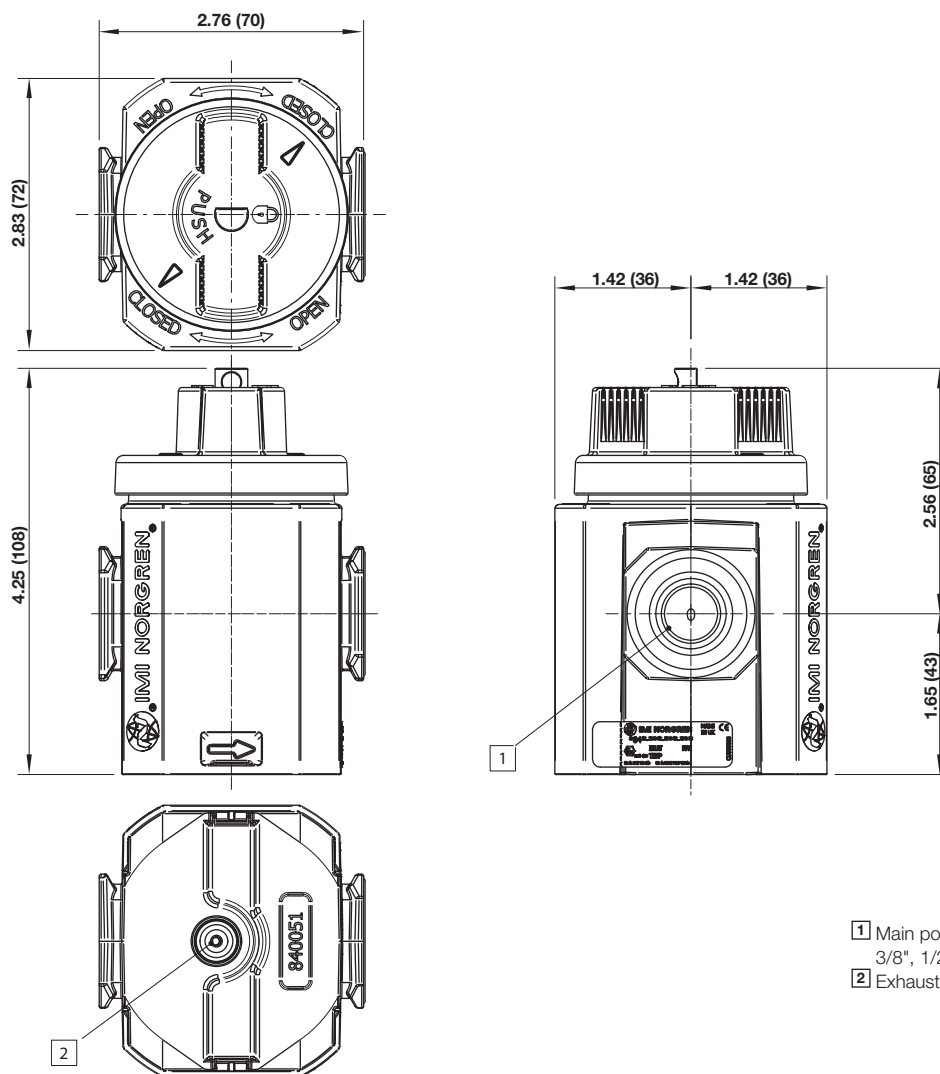


MS002A

*3) Max. pressure of silencers listed in this data sheet : 10bar. For pressure higher than 10bar please contact IMI Norgren

Dimensions

Dimensions in inches (mm)
 Projection/Third angle

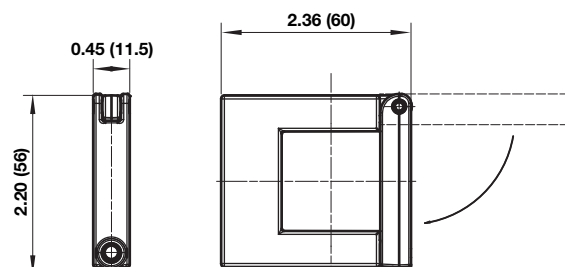
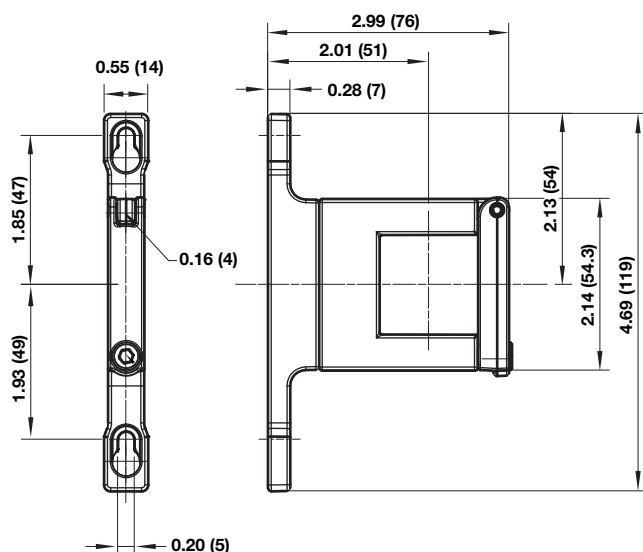


Accessories

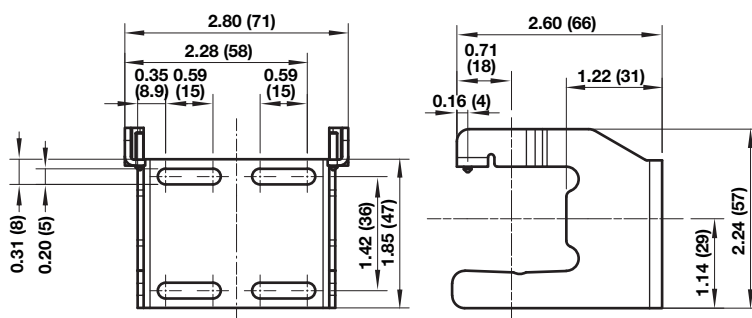
Dimensions in inches (mm)
 Projection/Third angle

Quikclamp® with wall bracket

Quikclamp®

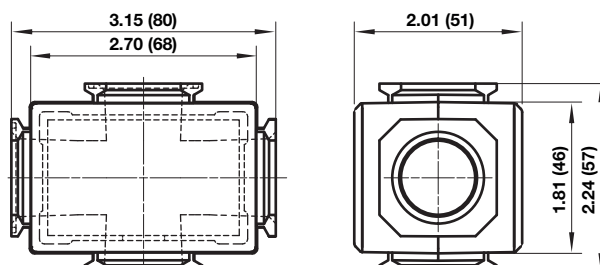
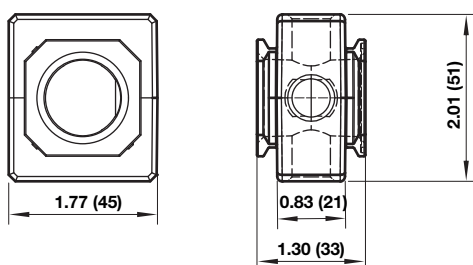


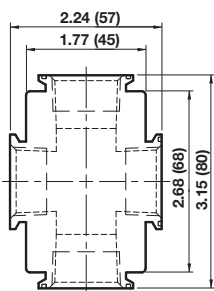
Mounting bracket



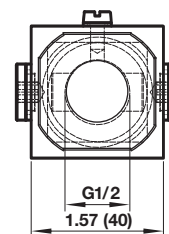
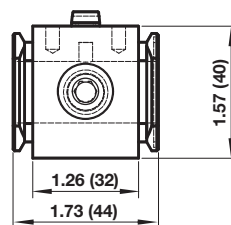
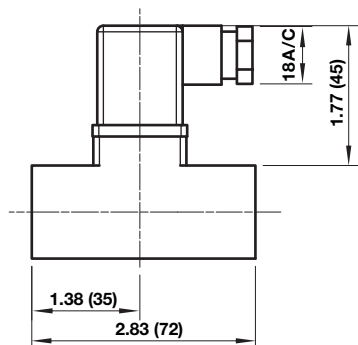
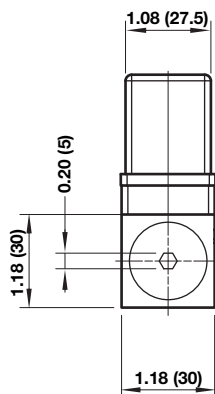
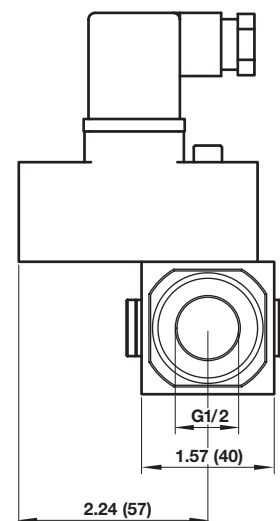
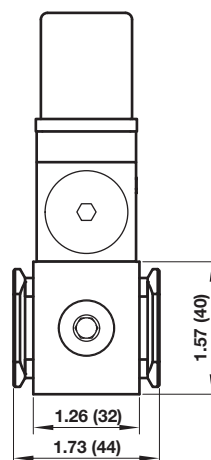
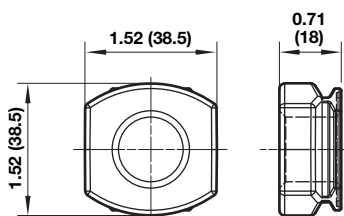
Pressure sensing block

Full flow porting block



Full flow vertical porting block

Porting block for 18D pressure switch

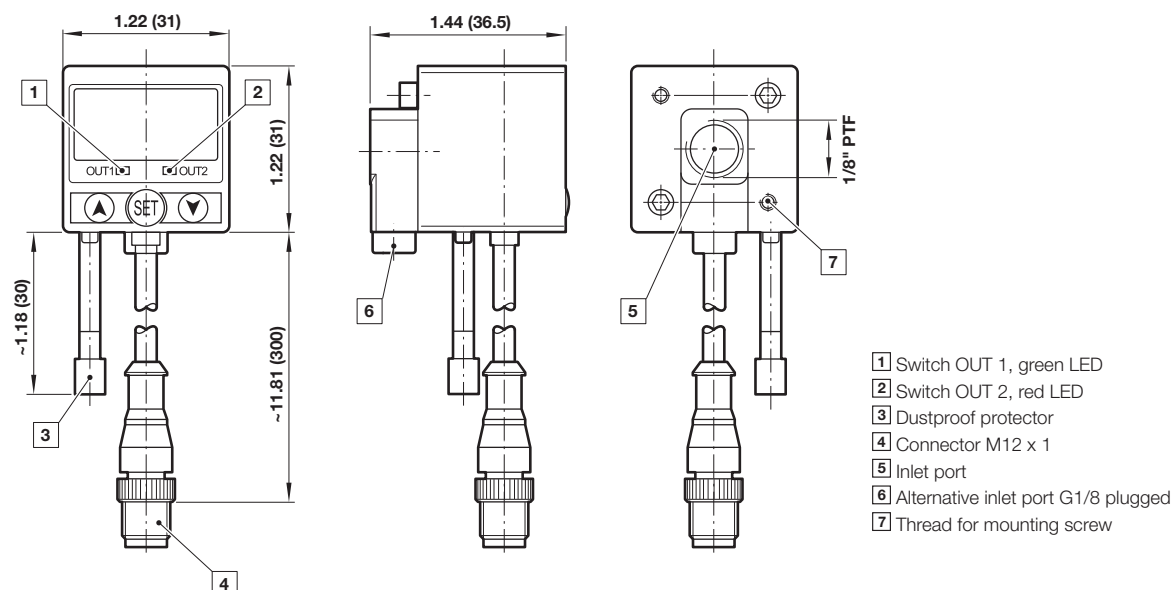
Dimensions in inches (mm)
 Projection/Third angle


18D Pressure switch

18D Porting block and 18D assembled

Pipe adaptor


51D Pressure switch - digital

Dimensions in inches (mm)

Projection/Third angle



Warning

Improper selection, misuse, age or malfunction of components used in systems can cause failure in various modes. The system designer is warned to consider the failure modes of all component parts and to provide adequate safeguards to prevent personal injury or damage to equipment or property in the event of such failure modes. System designers and end users are cautioned to consult instruction sheets and specifications available from the factory. The system designer/end user is responsible for verifying that all requirements for the application are met.

Warranty

The products described herein are warranted subject to seller's Standard Terms and Condition of Sale, available at seller's website.

Proposition 65: These products may contain chemicals known to the state of California to cause cancer, or birth defects, or other reproductive harm.