

- > **Port size: 3/8" to 3/4"**  
(PTF/ISO G)
- > **Excelon® Plus design**  
allows in-line installation  
or modular installation  
with other Excelon® Plus  
products
- > **High efficiency oil and  
particle removal**
- > **Double safety lock bowl**
- > **Metal bowl with prismatic  
liquid level indicator lens**
- > **Light weight  
Polycarbonate bowl  
with guard**
- > **Service indicator standard**
- > **Air purity class in  
accordance with ISO  
8573-1: Remaining oil  
aerosol to class 1\***

\*Tested in accordance with the  
methods laid out in ISO 12500-1 using an  
inlet oil aerosol concentration of 4mg/m<sup>3</sup>



### Technical features

#### Medium:

Compressed air only

#### Maximum supply pressure:

Polycarbonate bowl: 145 psi (10 bar)

Metal bowl: 290 psi (20 bar)

#### Remaining oil content:

0.01 mg/m<sup>3</sup> at +69°F (+21°C)

#### Particle removal:

To 0.01 µm

#### Port size:

G3/8, G1/2, G3/4,  
3/8 PTF, 1/2 PTF, 3/4 PTF

#### Flow:

Maximum flow to maintain stated oil  
removal performance at challenge  
rate of 4 mg/m<sup>3</sup>

F84C: 53 scfm (25 dm<sup>3</sup>/s),  
at port size: 1/2"

Operating pressure: 91 psi (6.3 bar)

#### Drain:

Manual or automatic

#### Automatic drain operating conditions (float operated):

Bowl pressure required to close  
drain: > 5 psi (0.35 bar)

Bowl pressure required to open  
drain: ≤ 2.9 psi (0.2 ba)

Minimum air flow required to close  
drain: 2 scfm (1 dm<sup>3</sup>/s)

#### Ambient/Media temperature:

Polycarbonate bowl:

+14 to +140°F (-10 to +60°C)

Metal bowl:

-4 to +149°F (-20 to +65°C)

Air supply must be dry enough

to avoid ice formation at  
temperatures below +35°F (+2°C).

#### Note:

Install an F84G filter with a 5 µm filter  
element upstream of the F84C filter  
for maximum service life.

#### Materials:

Body: Die cast aluminum

Body covers: ABS

Bowl: Transparent PC with PP guard

or die cast aluminum

Liquid level indicator lens

(metal bowl): PA


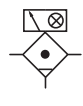
Filter element: Synthetic fiber

& PE foam

Bowl 'o'- ring: Chloroprene

Elastomers: NBR

### Technical data F84C - standard models

Symbol	Port size PTF	Drain	Bowl	Weight lb (kg)	Model
	3/8	Auto	Guarded polycarbonate	0.8 (0.38)	F84C-3AD-AP0
	1/2	Auto	Guarded polycarbonate	0.8 (0.38)	F84C-4AD-AP0
	3/4	Auto	Guarded polycarbonate	0.8 (0.38)	F84C-6AD-AP0
	3/8	Auto	Metal with level indicator	1.1 (0.52)	F84C-3AD-AD0
	1/2	Auto	Metal with level indicator	1.1 (0.52)	F84C-4AD-AD0
	3/4	Auto	Metal with level indicator	1.1 (0.52)	F84C-6AD-AD0
	3/8	Manual	Guarded polycarbonate	0.8 (0.38)	F84C-3AD-QP0
	1/2	Manual	Guarded polycarbonate	0.8 (0.38)	F84C-4AD-QP0
	3/4	Manual	Guarded polycarbonate	0.8 (0.38)	F84C-6AD-QP0
	3/8	Manual	Metal with level indicator	1.1 (0.52)	F84C-3AD-QD0
	1/2	Manual	Metal with level indicator	1.1 (0.52)	F84C-4AD-QD0
	3/4	Manual	Metal with level indicator	1.1 (0.52)	F84C-6AD-QD0

Option selector

F84C-★ ★ D-★ ★ 0

Port size	Substitute
3/8"	3
1/2"	4
3/4"	6
Thread form	Substitute
PTF	A
ISO G parallel	G

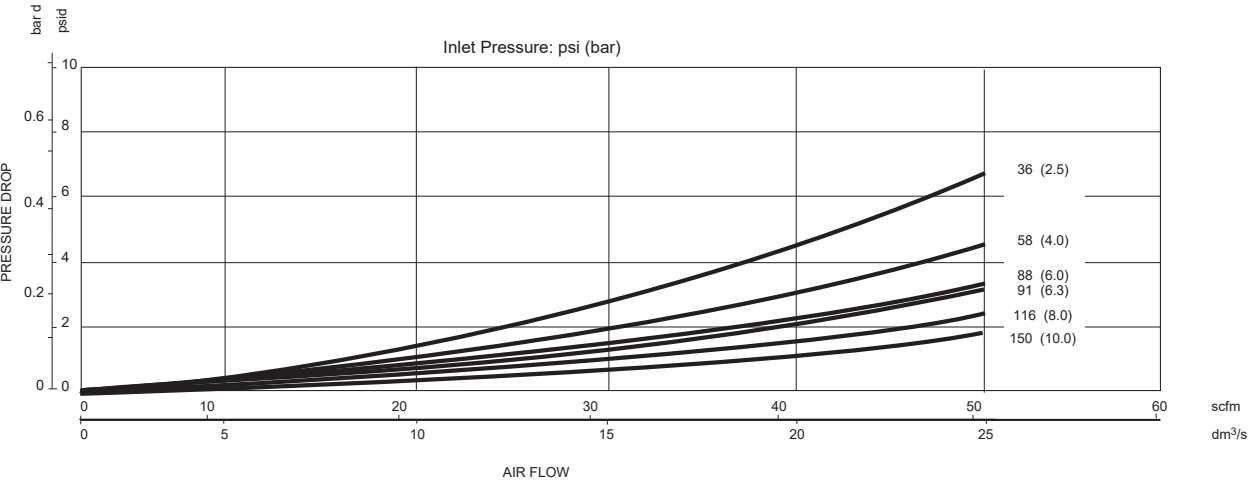
Bowl	Substitute
Metal with liquid indicator	D
Transparent with guard	P
Drain	Substitute
Manual	Q
Auto drain	A

Typical performance characteristics




Inlet pressure psi (bar)	Maximum flow scfm (dm³/s) *1)
36 (2.5)	25 (12)
58 (4.0)	36 (17)
91 (6.3)	53 (25)
116 (8.0)	63 (30)
145 (10)	74 (35)



\*1) Maximum flow to maintain stated oil removal performance



Flow characteristics  
F84C

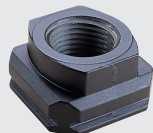
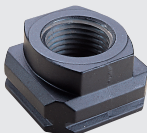
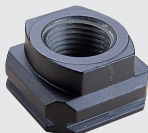


## Accessories

<div>Wall mounting bracket</div> <div></div> <div>Page 6</div> <div>840024-50KIT</div>	<div>Quikclamp®</div> <div></div> <div>Page 6</div> <div>840014-51KIT</div>	<div>Quikclamp® with bracket assembled</div> <div></div> <div>Page 6</div> <div>840014-52KIT</div>	<div>Pressure sensing block 1/4 PTF</div> <div></div> <div>Page 6</div> <div>840016-50KIT</div>	<div>Pressure sensing block G1/4</div> <div></div> <div>Page 6</div> <div>840016-51KIT</div>
---	--	---	--	---

<div>Full flow porting block 3/4 PTF</div> <div></div> <div>Page 6</div> <div>840028-68KIT</div>	<div>Full flow porting block G3/4</div> <div></div> <div>Page 6</div> <div>840028-69KIT</div>	<div>Full flow porting block 3/4 PTF</div> <div></div> <div>Page 6</div> <div>840028-50KIT</div>	<div>Full flow porting block G3/4</div> <div></div> <div>Page 6</div> <div>840028-53KIT</div>
---	--	---	---





<div>Pressure switch interface block (18D pressure switch) G1/2</div> <div></div> <div>Page 7</div> <div>0337717000000000</div>	<div>Pneumatic pressure switch 18D (7 to 120 psi)</div> <div></div> <div>Page 7</div> <div>0881300000000000</div>	<div>Digital pressure switch 51D (-14.5 to 145 psi)</div> <div></div> <div>Page 7</div> <div>0860811000000000</div>
---	---	---



<div>Port Adaptors 3/8 PTF</div> <div></div> <div>840015-02KIT</div>	<div>Port Adaptors 1/2 PTF</div> <div></div> <div>Page 7</div> <div>840015-03KIT</div>	<div>Port Adaptors 3/4 PTF</div> <div></div> <div>Page 7</div> <div>840015-04KIT</div>	<div>Port Adaptors G3/8</div> <div></div> <div>Page 7</div> <div>840015-10KIT</div>	<div>Port Adaptors G1/2</div> <div></div> <div>Page 7</div> <div>840015-11KIT</div>	<div>Port Adaptors G3/4</div> <div></div> <div>Page 7</div> <div>840015-12KIT</div>
---	---	---	---	--	--

Maintenance/Service

Coalescing filter element	Auto drain kit with metal Nut - inch	Auto drain kit with metal Nut - Metric
		
840044-50KIT	6000-61KIT	6000-60KIT

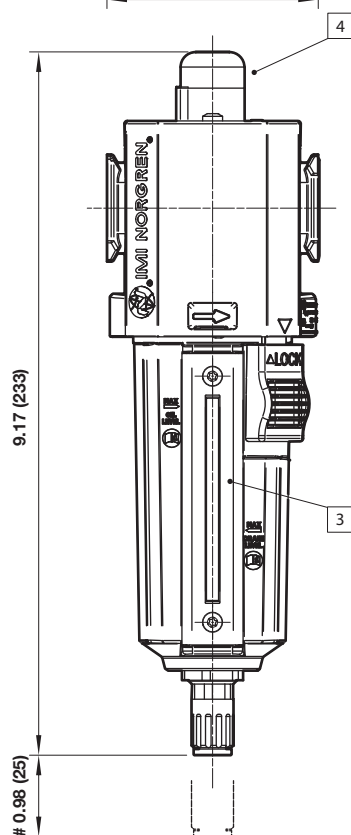
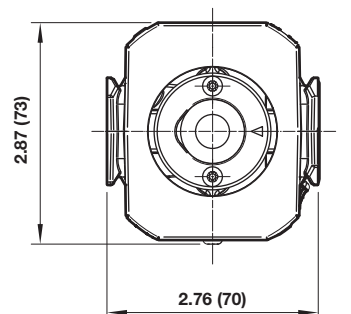
Spare parts

Filter Bowl (Guarded Poly bowl with auto drain 6 mm PIF)	Filter Bowl (Guarded Poly bowl with manual drain)	Filter Bowl (Metal with S/Glass & auto drain, 6 mm PIF)	Filter Bowl (Metal with S/Glass & manual drain)
			
840025-51KIT	840025-50KIT	840003-51KIT	840003-50KIT

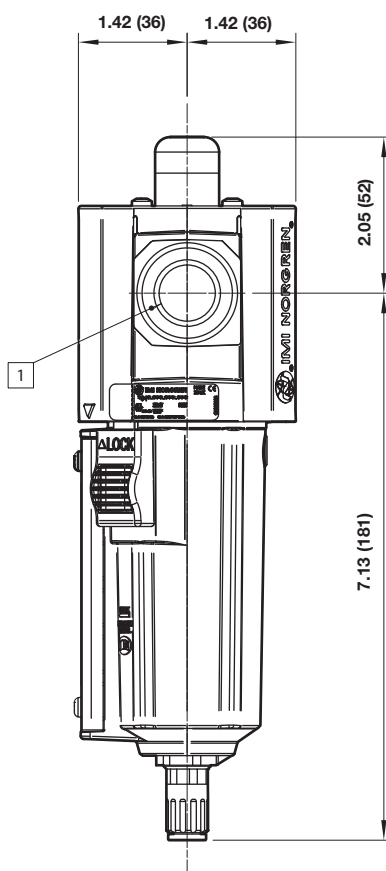
Filter Bowl (Guarded Poly bowl with auto drain, 1/4 PIF)	Filter Bowl (Metal with S/Glass & auto drain, 1/4 PIF)
	
840025-53KIT	840003-56KIT

## Dimensions

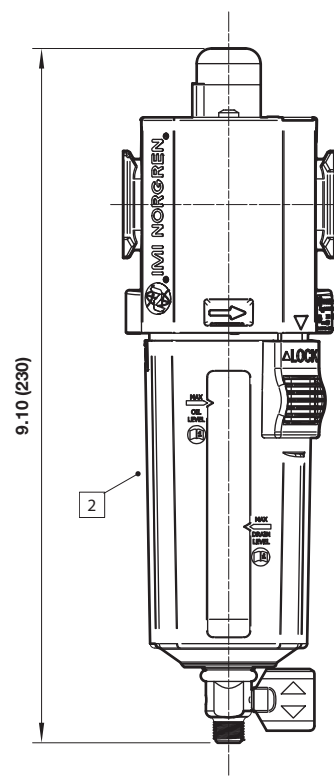
Dimensions in inches (mm)  
 Projection/Third angle



Automatic Drain



1/4 Turn Manual Drain



# Minimum clearance for bowl removal

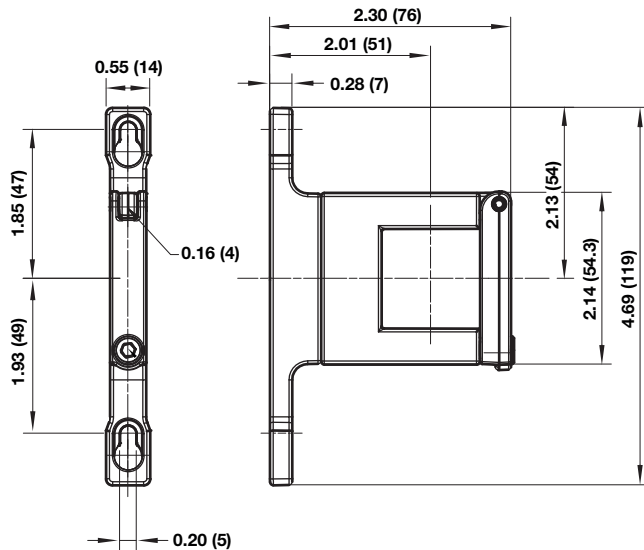
- 1 Main ports 3/8", 1/2" or 3/4"  
(ISO G/PTF)
- 2 Transparent bowl with guard
- 3 Metal bowl with liquid level  
indicator lens
- 3 Service indicator

## Accessories

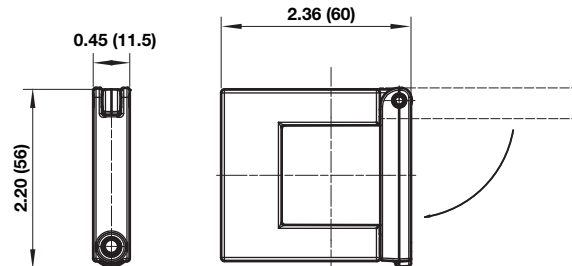
Dimensions in inches (mm)  
Projection/Third angle



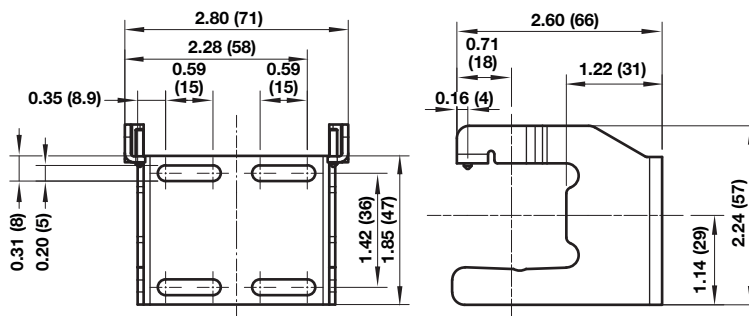
### Quikclamp® with wall bracket



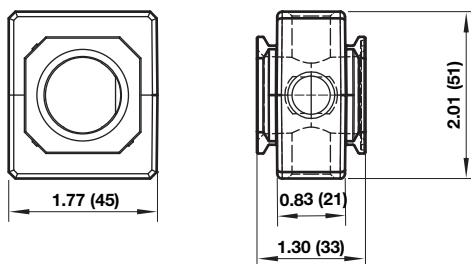
### Quikclamp®



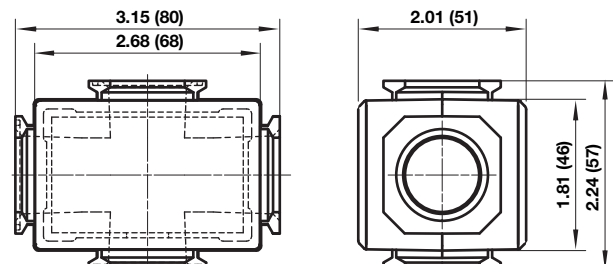
### Mounting bracket

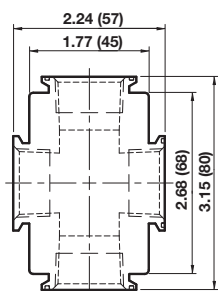


### Pressure sensing block

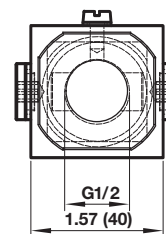
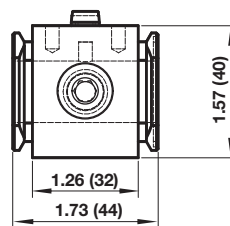
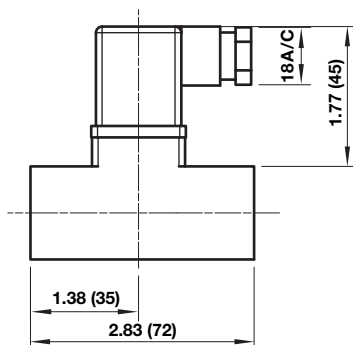
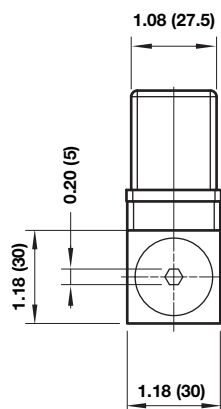
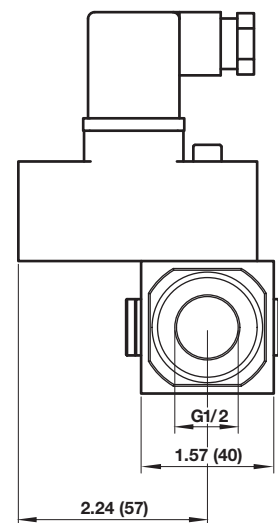
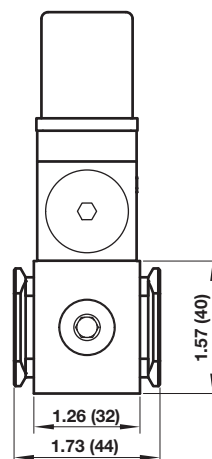
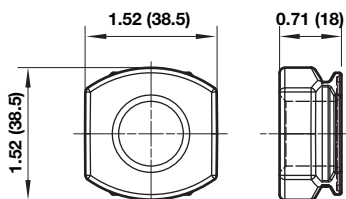


### Full flow porting block



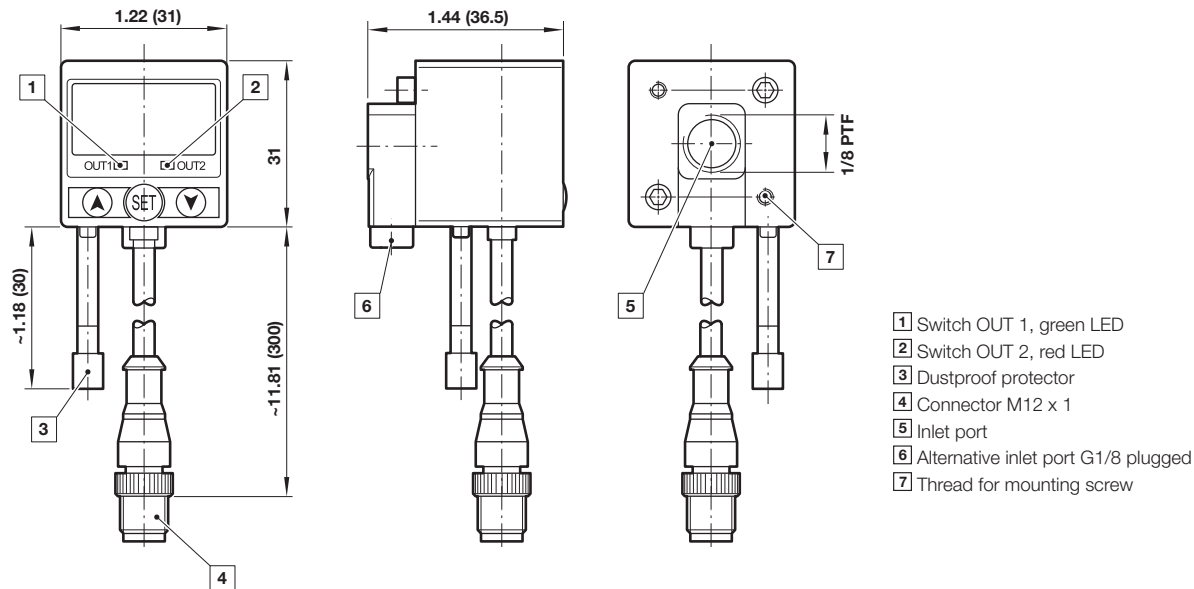
**Full flow vertical porting block**

**Porting block for 18D pressure switch**

Dimensions in inches (mm)  
 Projection/Third angle


**18D Pressure switch**

**18D Porting block and 18D assembled**

**Pipe adaptor**


## 51D Pressure switch - digital

Dimensions in inches (mm)  
Projection/Third angle



### Warning

Improper selection, misuse, age or malfunction of components used in systems can cause failure in various modes. The system designer is warned to consider the failure modes of all component parts and to provide adequate safeguards to prevent personal injury or damage to equipment or property in the event of such failure modes. System designers and end users are cautioned to consult instruction sheets and specifications available from the factory. The system designer/end user is responsible for verifying that all requirements for the application are met.

### Warranty

The products described herein are warranted subject to seller's Standard Terms and Condition of Sale, available at seller's website.

**Proposition 65:** These products may contain chemicals known to the state of California to cause cancer, or birth defects, or other reproductive harm.