

- > **Port Size 3/8" to 3/4"**  
(PTF/ISO G)
- > **Quickclamp connection system** offers full modularity
- > **40 micron particle and high efficiency water removal (>98%)**
- > **Easy to read flush mounted integrated pressure gauge as standard**
- > **Shut off valve & Filter/regulator with tamper resistant feature**
- > **Metal bowl with prismatic liquid level indicator**
- > **Light weight guarded polycarbonate bowl**
- > **All round (360°) visibility of sight dome for ease of lubricator drip rate setting**



### Technical features

#### Medium:

Compressed air only

#### Maximum supply pressure:

Polycarbonate bowl: 145 psi (10 bar)  
Metal bowl: 290 psi (20 bar)

#### Outlet pressure ranges:

4 to 145 psi (0.3 to 10 bar),

#### Filter element:

40 µm

#### Port size:

G3/8, G1/2, G3/4,  
3/8 PTF, 1/2 PTF, 3/4 PTF

#### Gauge:

Integrated as standard

#### Diaphragm Type:

Relieving

#### Drain:

Manual or automatic

#### Automatic drain operating conditions (float operated):

Bowl pressure required to close drain: > 5 psi (0.35 bar)

Bowl pressure required to open drain: ≤ 2.9 psi (0.2 bar)

Minimum air flow required to close drain: 2 scfm (1 dm³/s)

#### Ambient/Media temperature:

Polycarbonate bowl:

+14 to +140°F (-10 to +60°C)

Metal bowl:

-4 to +149°F (-20 to +65°C)

Air supply must be dry enough

to avoid ice formation at

temperatures below +35°F (+2°C).

#### Materials:

Body: Die cast aluminum

Body covers: ABS

Bonnet: Acetal

Valve: PP

Bowl: Transparent PC with PP guard or die cast aluminum

Liquid level indicator lens

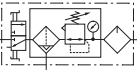
(metal bowl): PA

Filter element: sintered PP

Bowl 'o'- ring: Chloroprene

Elastomers: NBR

### Technical data BL84 - standard models with shut off valve, automatic drain, and micro fog lubricator

Symbol	Port size	Bowl type	Weight lb (kg)	Model *1)
	3/8	Polycarbonate with guard	3.6 (1.65)	BL84-301A
	1/2	Polycarbonate with guard	3.6 (1.65)	BL84-401A
	3/4	Polycarbonate with guard	3.6 (1.65)	BL84-601A
	3/8	Metal with sight glass	4.2 (1.92)	BL84-351A
	1/2	Metal with sight glass	4.2 (1.92)	BL84-451A
	3/4	Metal with sight glass	4.2 (1.92)	BL84-651A

\*1) All models shown here are supplied with integrated gauge applicable for flow direction left to right.

With flow direction right to left please use the online configurator [www.imi-precision.com/air-preparation-configurator](http://www.imi-precision.com/air-preparation-configurator) or contact IMI Norgren

**Option selector \*1)**

Port size	Substitute
3/8"	3
1/2"	4
3/4"	6
Units	Substitute
Filter/Regulator w. auto drain, Micro fog lubricator, Polycarbonate bowls	0
Filter/Regulator w. auto drain, Oil fog lubricator, Polycarbonate bowls	1
Filter/Regulator w. manual drain, Micro fog lubricator, Polycarbonate bowls	2
Filter/Regulator w. manual drain, Oil fog lubricator, Polycarbonate bowls	3
Filter/Regulator w. auto drain, Micro fog lubricator, Metal bowls	5
Filter/Regulator w. auto drain, Oil fog lubricator, Metal bowls	6
Filter/Regulator w. manual drain, Micro fog lubricator, Metal bowls	7
Filter/Regulator w. manual drain, Oil fog lubricator, Metal bowls	8

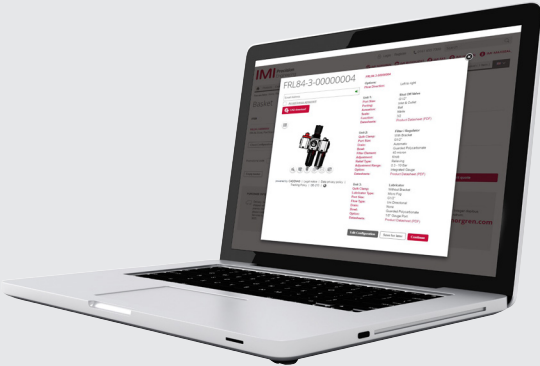
**BL84-★★★★**

Thread form	Substitute
PTF	A
ISO G parallel	G
Accessories	Substitute
Shut-off valve & gauge & brackets	1
Gauge & bracket	5





\*1) All models shown here are applicable for flow direction left to right. With flow direction right to left please use the online configurator [www.imi-precision.com/air-preparation-configurator](http://www.imi-precision.com/air-preparation-configurator) or contact IMI Norgren





**In addition to the standard box set units shown on this data sheet, further combinations can be configured using our online Air Preparation configurator:**

[www.imi-precision.com/air-preparation-configurator](http://www.imi-precision.com/air-preparation-configurator)



## Accessories

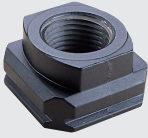
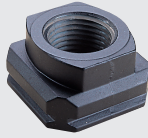
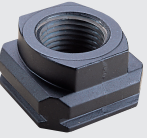
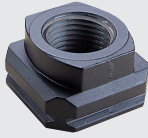
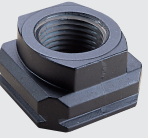
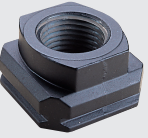
<b>Quikclamp®</b>	<b>Quikclamp® with bracket assembled</b>	<b>Pressure sensing block 1/4 PTF</b>	<b>Pressure sensing block G1/4</b>
			
<b>Page 7</b>	<b>Page 7</b>	<b>Page 7</b>	<b>Page 7</b>
840014-51KIT	840014-52KIT	840016-50KIT	840016-51KIT

<b>Integrated gauge 140 psi gauge</b>	<b>Integrated gauge 300 psi gauge</b>	<b>Gauge adaptor kit 1/8 PTF</b>	<b>Gauge adaptor kit R 1/8</b>
			
<b>840073-01KIT</b>	<b>840073-02KIT</b>	<b>840100-01KIT</b>	<b>840100-02KIT</b>






<b>Full flow porting block 3/4 PTF</b>	<b>Full flow porting block G3/4</b>	<b>Pressure switch interface block (18D pressure switch) G1/2</b>	<b>Pneumatic pressure switch 18D (7 to 120 psi) *1)</b>	<b>Digital pressure switch 51D (-14.5 to 145 psi) *2)</b>
				
<b>Page 7</b>	<b>Page 7</b>	<b>Page 8</b>	<b>Page 8</b>	<b>Page 8</b>
840028-50KIT	840028-53KIT	0337717000000000	0881300000000000	0860811000000000

\*1) Flanged version. For other pressure ranges, please see data sheet 5.11.001

\*2) For other pressure ranges, please see data sheet 5.11.385

<b>Port Adaptors 3/8 PTF</b>	<b>Port Adaptors 1/2 PTF</b>	<b>Port Adaptors 3/4 PTF</b>	<b>Port Adaptors G3/8</b>	<b>Port Adaptors G1/2</b>	<b>Port Adaptors G3/4</b>
					
<b>Page 8</b>	<b>Page 8</b>	<b>Page 8</b>	<b>Page 8</b>	<b>Page 8</b>	<b>Page 8</b>
840015-02KIT	840015-03KIT	840015-04KIT	840015-10KIT	840015-11KIT	840015-12KIT

## Padlock

<b>Padlock</b>	<b>Lockout device</b>	<b>Silencer</b>		<b>Sinter bronze silencer *3) 1/4 PTF</b>
				
<b>840055-01KIT</b>	<b>840055-02KIT</b>	<b>M/S2</b>	<b>C/S2</b>	<b>MS002A</b>

\*3) Max. pressure of silencers listed in this data sheet : 10bar. For pressure higher than 10bar please contact IMI Norgren

## Maintenance/Service

**Auto drain kit with  
metal Nut - inch**



6000-61KIT

**Auto drain kit with  
metal Nut - Metric**



6000-60KIT

**R84 / B84  
Elastomer Kit**



FRLB84-KIT

**Filter cartridges  
40 micron**



840038-51KIT

## Lubricator sight dome kit



Micro fog (red) 840055-50KIT

Oil fog (green) 840055-51KIT

## Service kits

**Filter Bowl  
(Guarded Poly bowl with  
auto drain 6 mm PIF)**



840025-51KIT

**Filter Bowl  
(Guarded Poly bowl with manual  
drain)**



840025-50KIT

**Filter Bowl  
(Metal with S/Glass & auto drain,  
6 mm PIF)**



840003-51KIT

**Filter Bowl  
(Metal with S/Glass &  
manual drain)**



840003-50KIT

**Filter Bowl  
(Guarded Poly bowl with  
auto drain, 1/4 PIF)**



840025-53KIT

**Filter Bowl  
(Metal with S/Glass &  
auto drain, 1/4 PIF)**



840003-56KIT

**Lubricator bowl  
Guarded Poly**



840025-52KIT

**Lubricator bowl  
Metal with sight glass**



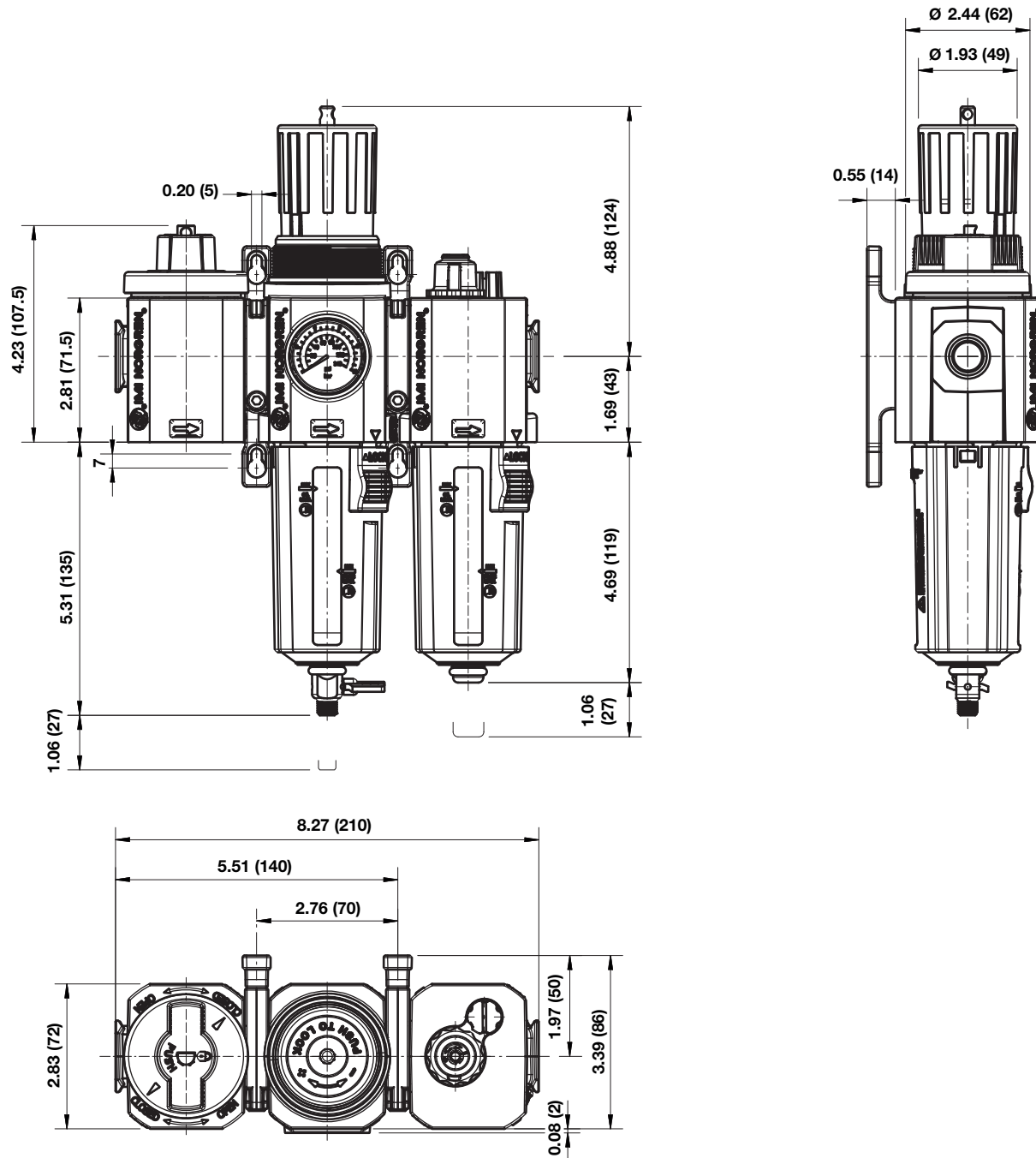
840003-52KIT

## Dimensions

Dimensions in inches (mm)  
Projection/Third angle



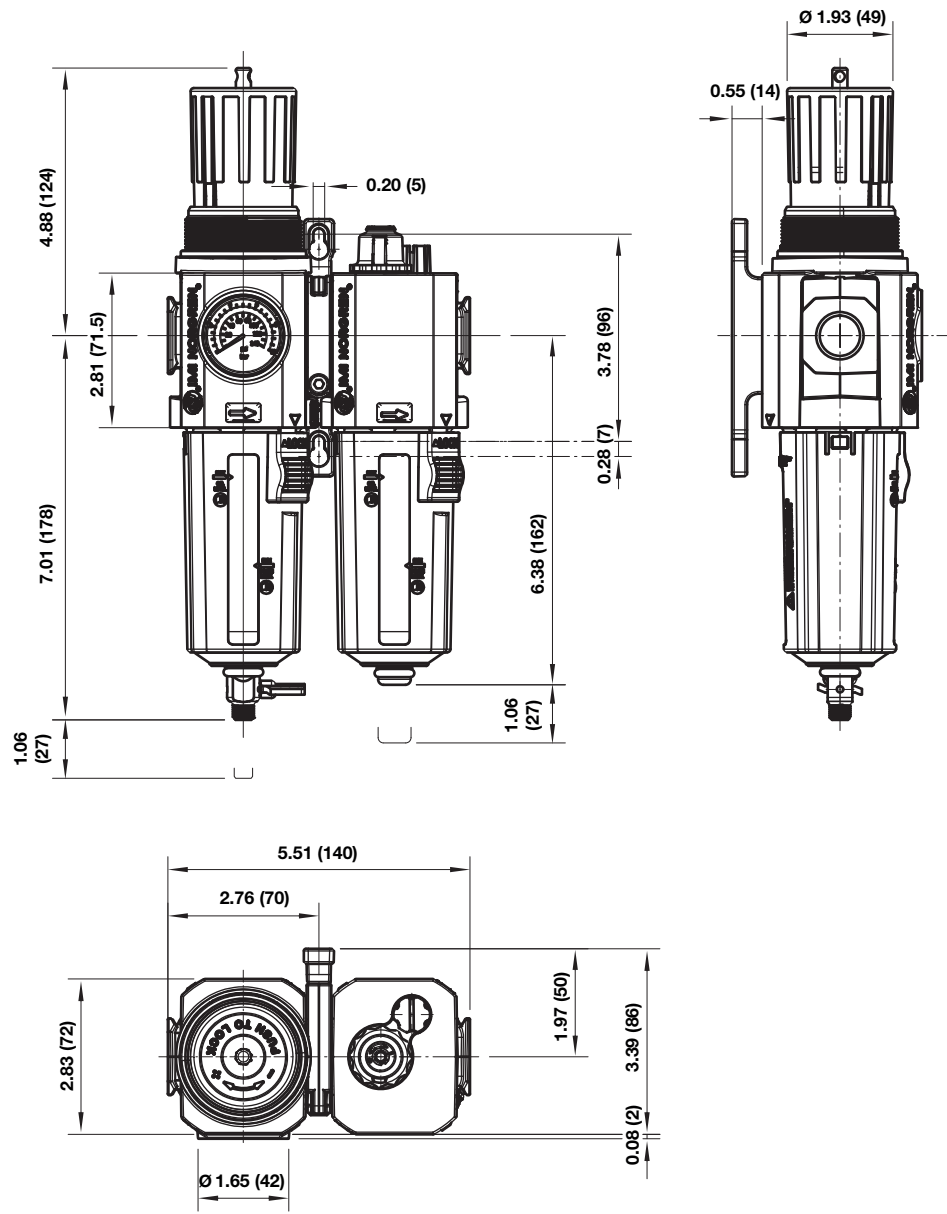
### Shut-off valve, Filter/regulator and Lubricator



Dimensions

Filterregulator and Lubricator

Dimensions in inches (mm)  
Projection/Third angle

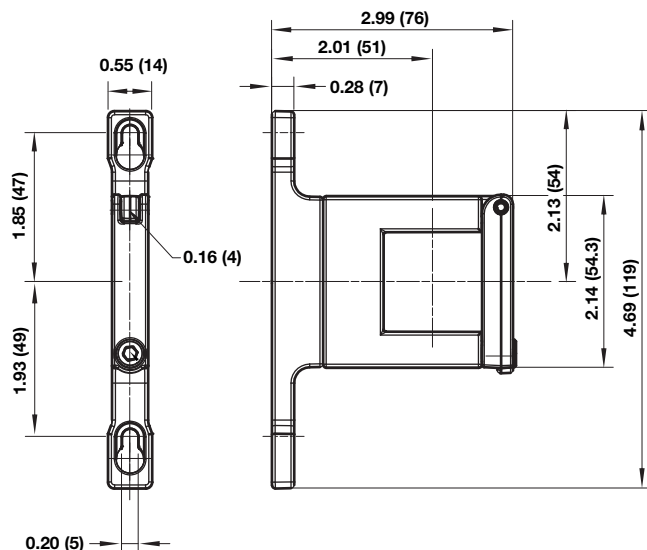


## Accessories

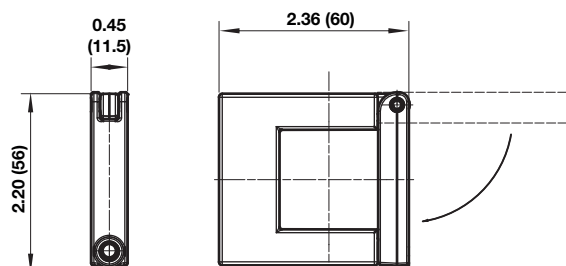
Dimensions in inches (mm)  
 Projection/Third angle



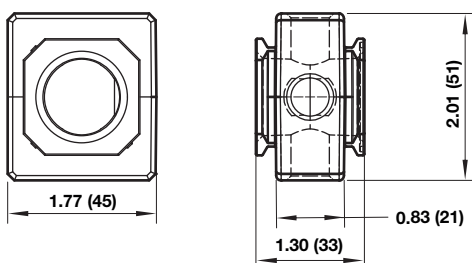
### Quikclamp® with wall bracket



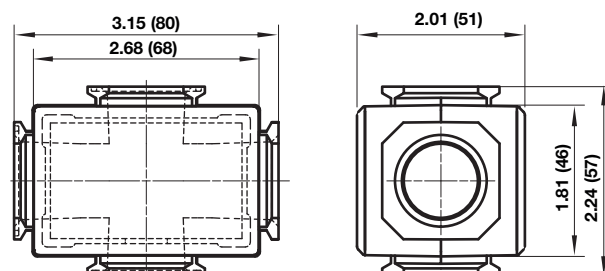
### Quikclamp®



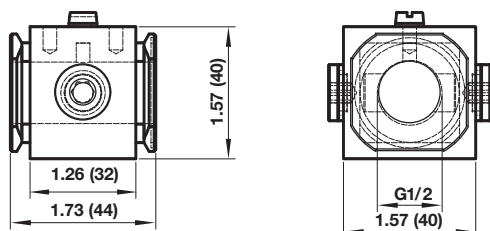
### Pressure sensing block



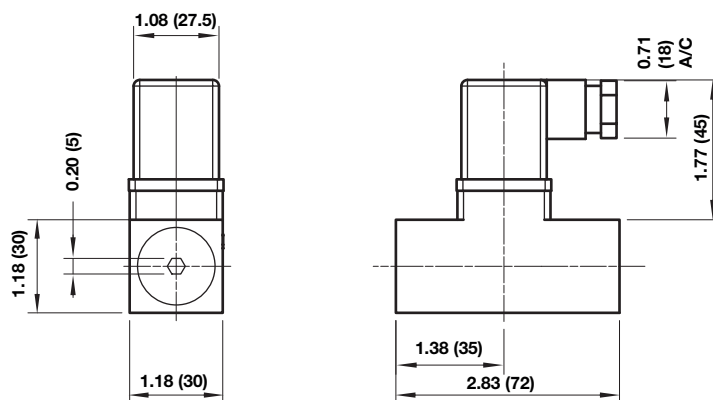
### Full flow porting block



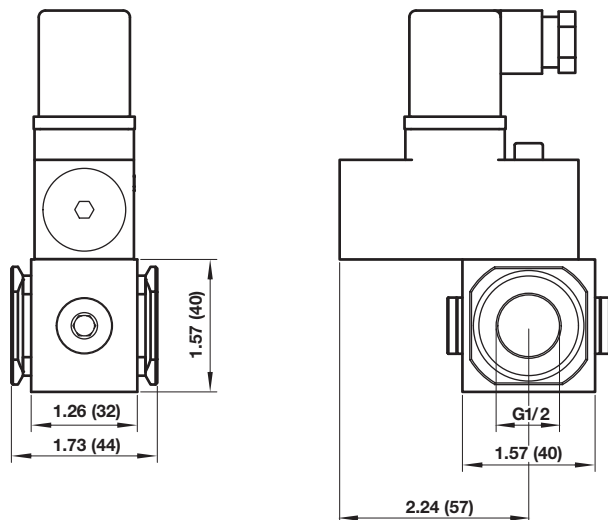
### Porting block for 18D pressure switch



### 18D Pressure switch

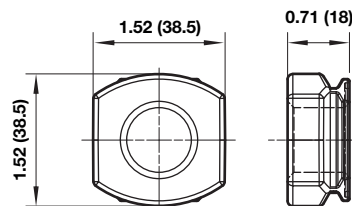


### 18D Porting block and 18D assembled

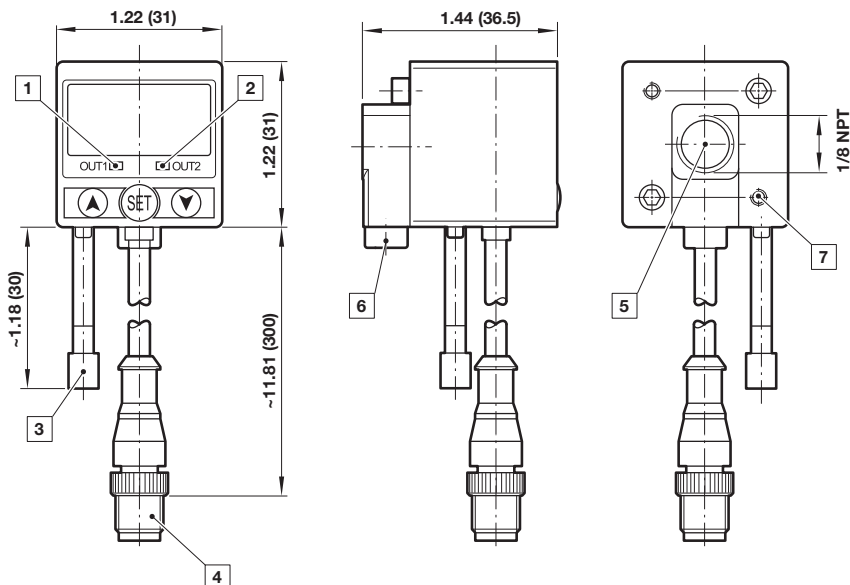


### Pipe adaptor

Dimensions in mm  
Projection/Third angle



### 51D Pressure switch - digital



- 1 Switch OUT 1, green LED
- 2 Switch OUT 2, red LED
- 3 Dustproof protector
- 4 Connector M12 x 1
- 5 Inlet port
- 6 Alternative inlet port G1/8 plugged
- 7 Thread for mounting screw

### Warning

Improper selection, misuse, age or malfunction of components used in systems can cause failure in various modes. The system designer is warned to consider the failure modes of all component parts and to provide adequate safeguards to prevent personal injury or damage to equipment or property in the event of such failure modes. System designers and end users are cautioned to consult instruction sheets and specifications available from the factory. The system designer/end user is responsible for verifying that all requirements for the application are met.

### Warranty

The products described herein are warranted subject to seller's Standard Terms and Condition of Sale, available at seller's website.

**Proposition 65:** These products may contain chemicals known to the state of California to cause cancer, or birth defects, or other reproductive harm.