



Automation

NEW CAMOZZI SOLUTIONS

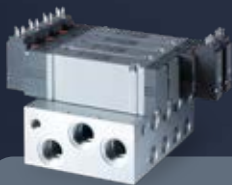


NEW CAMOZZI SOLUTIONS



Series D

▶ Page 02



**Series D
VA & VB
Versions**

▶ Page 04



Series CX4

▶ Page 06



Series PRE

▶ Page 08



Series ASX - ASP

▶ Page 14 - 15



Series 7000 Fluidics

▶ Page 16



Series PME

▶ Page 09



**Series 63
END LOCK**

▶ Page 10



Series KL - KLE

▶ Page 12



**Series MX
Safemax with
soft start valve**

▶ Page 13

Discover our latest components designed to meet the requirements of an ever more demanding market looking for innovation, reliability and higher flexibility.

SECTORS AND APPLICATIONS



Industrial automation

Camozzi Automation offers a complete range of components, systems and technologies for industrial automation, including tailored solutions for any application.

APPLICATION AREAS:

Packaging, Food & Beverage, Plastics & Rubber, Automotive, Electronic Systems, Textile Machinery, Assembly & Robotics, Printing & Paper, Woodworking Machinery



Life Science

Camozzi Automation supports the Life Science sector with a wide range of components and customised solutions for the control of fluids - both liquids and gases - with high efficiency and high reliability performance.

APPLICATION AREAS:

Medical, Analytical



Transportation

Camozzi Automation offers the Transportation sector a wide range of solutions, ready for use in harshest conditions, assuring reliable and efficient operation - Every Day.

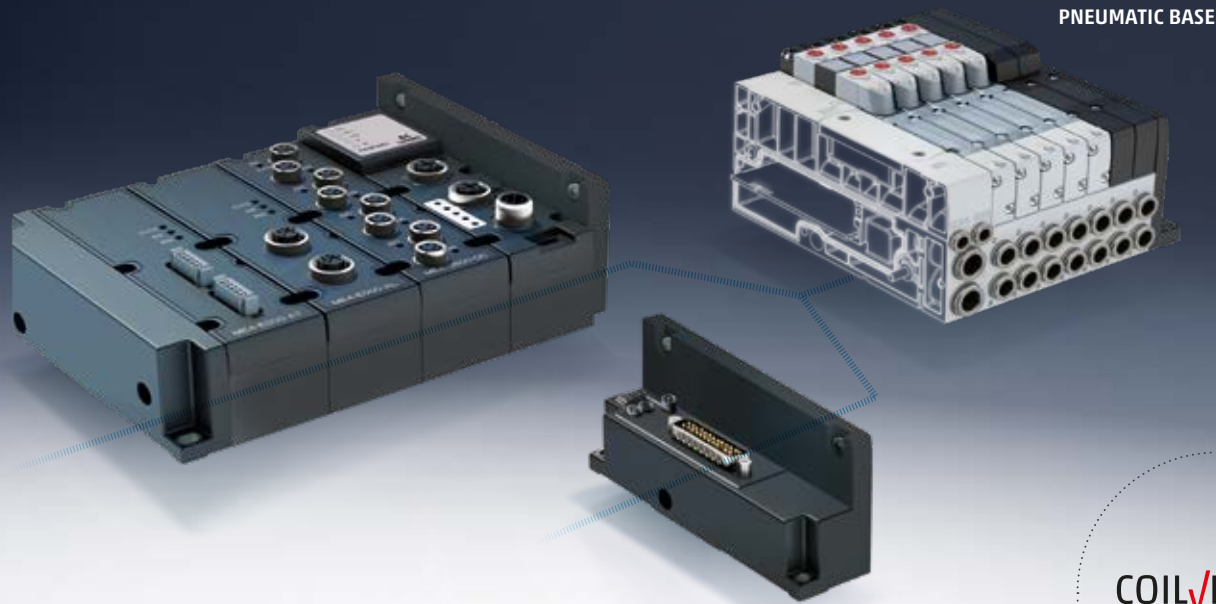
APPLICATION AREAS:

Truck & Trailer, Bus & Coach, Rail, Off Road, Passenger Car & Light Commercial Vehicles



SERIES D: MODULAR AND FLEXIBLE

Series D is a new valve system that ensures **maximum flexibility and productivity** across many primary industrial automation processes. Single pneumatic and electric subbases plus a **simple valve-connection system** make the Series D valve island the ideal solution for all applications that require quick and **easy installation** of pneumatic functionality. Series D is available in both multipole and in serial communication versions. The Fieldbus module allows control of the valve island using the main fieldbus protocols, making it **easy to integrate pneumatic and electrical functionality** in the most advanced automation systems.



FIELDBUS VERSION

128 Digital I/O and 16 Analog I/O
with up to 128 coils on 64 valve positions

IO-LINK VERSION

64 coils on 32 valve positions

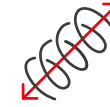
MULTIPOLE MODULE

Sub-D 25 pins with up to 11 valve positions
Sub-D 44 pins with up to 19 valve positions

PNEUMATIC BASE

COILVISION®
TECHNOLOGY

BENEFITS



Flexibility in connecting
different I/O modules



Integrated diagnostics
and predictivity



Available protocols:
**PROFIBUS-DP, CANopen,
EtherNet/IP, PROFINET,
EtherCAT, IO-Link**



UL Recognized Components
for Canada and
the United States

The Series D valve island is also equipped with **CoilVision® technology** which can monitor and predict the wear and efficiency status of selected parts of the solenoid valves. The gathered data, alarm history and health status are indicated through different combinations of flashing LEDs on the module and can be sent to a PLC or to a wireless IIoT gateway and then on to the Cloud.

4 SIZES FOR UNLIMITED APPLICATIONS

Series D - Size 1



The ideal solution for all industrial applications that require quick and easy installation of pneumatic functionality in restricted spaces.

MAIN TECHNICAL FEATURES

Size	10.5 mm
Flow	250 NI/min



Compact design



Individual, modular sub-bases in technopolymer



Highly expandable electric and pneumatic functionality



VIEW CATALOGUE

Series D - Size 2



Designed for applications that demand compact dimensions and high flow rates.

MAIN TECHNICAL FEATURES

Size	16 mm
Flow	950 NI/min



Compact design



Individual, modular sub-bases in technopolymer



Highly expandable electric and pneumatic functionality



VIEW CATALOGUE

Series D - Size 4



Particularly suitable for all applications that require high flow rates and require solutions with a robust and compact design.

MAIN TECHNICAL FEATURES

Size	25 mm
Flow	2000 NI/min



High flow rates



Robust design



High reliability



VIEW CATALOGUE

Series D - Size 5



A single island with a mix of sizes (10.5 and 16) that offers one Multipole or Fieldbus connection, with common positional fixings and single modularity.

MAIN TECHNICAL FEATURES

Size	10.5 + 16 mm
Flow	250 - 950 NI/min



Only one connection (Multipole or Fieldbus)



Combination of flow types in one valve island



Compact dimensions



VIEW CATALOGUE

SERIES D - VA and VB Versions: VERSATILE, COMPACT, FLEXIBLE

Series D range is enhanced with the addition of two new valve and solenoid valve variants that are easy to install and deliver **high performance within a compact footprint**.

The VA and VB versions are available in three sizes with different flow rates. They can both be **used individually or mounted to a manifold**. Thanks to their versatility, compact design and aluminium body, the Series D valves and solenoid valves are suitable for a wide range of industrial applications, from traditional uses right through to more innovative or demanding sectors. The valves' functionality and high flexibility make them an extremely **versatile and precise solution** to meet every need.

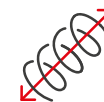
BENEFITS



Robust design



Compact design for restricted spaces

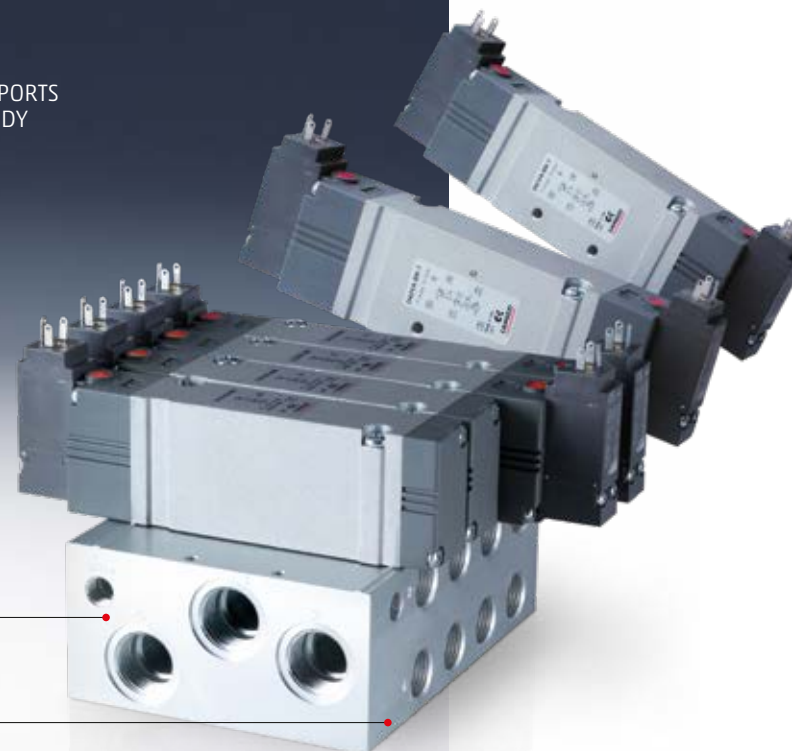


Maximum versatility



CONNECTOR PORTS
ON VALVE BODY

SUBBASE WITH UP TO 19
VALVE POSITIONS



SUBBASE WITH UP TO 19
VALVE POSITIONS

CONNECTOR PORTS
ON SUBBASE

VA and VB Versions

Series D - VA Version



MAIN TECHNICAL FEATURES

Pneumatic connection (VA version)

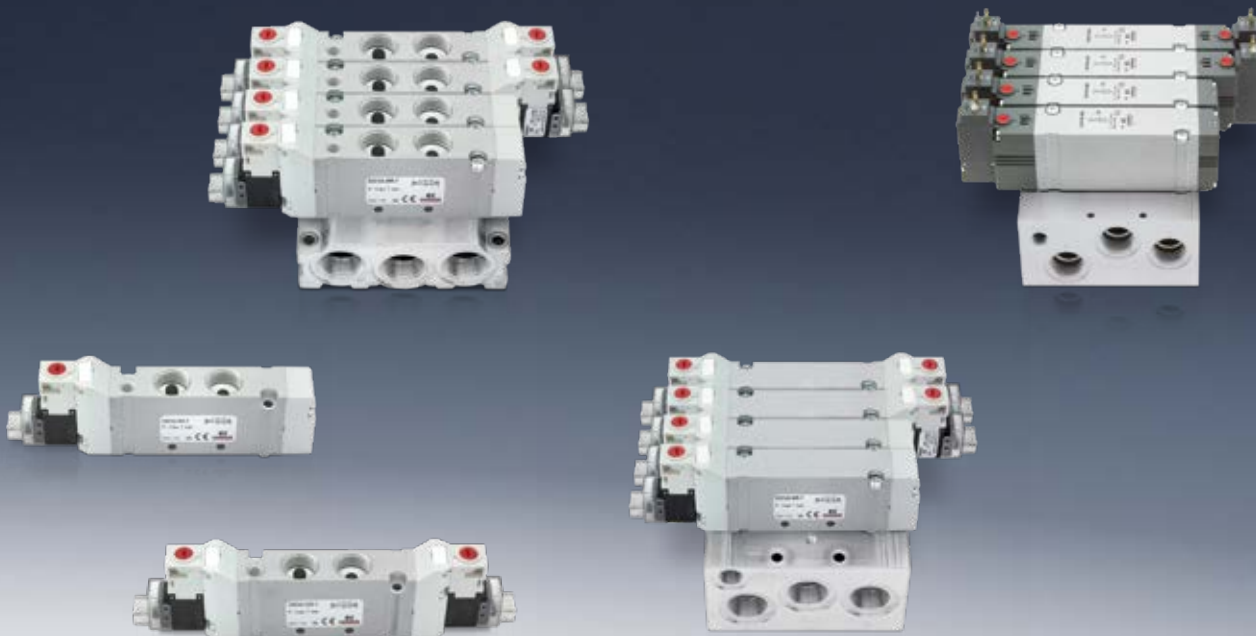
Connector ports on valve body

Allows manifold mounting



VIEW
CATALOGUE

Series D - VA and VB Versions



MAIN TECHNICAL FEATURES

Electrical connection (VA and VB versions)

<i>Micro connector</i>	size 10.5, 16 mm
<i>M8 connector</i>	size 10.5, 16 mm flow
<i>EN 175301C connector</i>	size 16, 25 mm flow



VIEW
CATALOGUE

SERIES CX4: HIGHLY FLEXIBLE CONNECTIVITY

The serial node CX4 is compatible with the most commonly used protocols: **Profibus-Dp**, **PROFINET**, **CANopen**, **EtherCAT**, **EtherNet/IP**. As well as different analog and digital I/O modules, advanced modules can be connected via the serial module to acquire data from thermocouples, RTD temperature sensors or sensors in a bridge configuration.

The **mechanical and electrical connection system** as well as the internal bus make the serial node extremely flexible. Users are free to add, move, remove and substitute different modules as well as replace its communication protocol. All this in restricted spaces.



BENEFITS



**Compact size
for restricted spaces**



**Reduced installation
and maintenance times**



**Flexibility
in connecting modules**



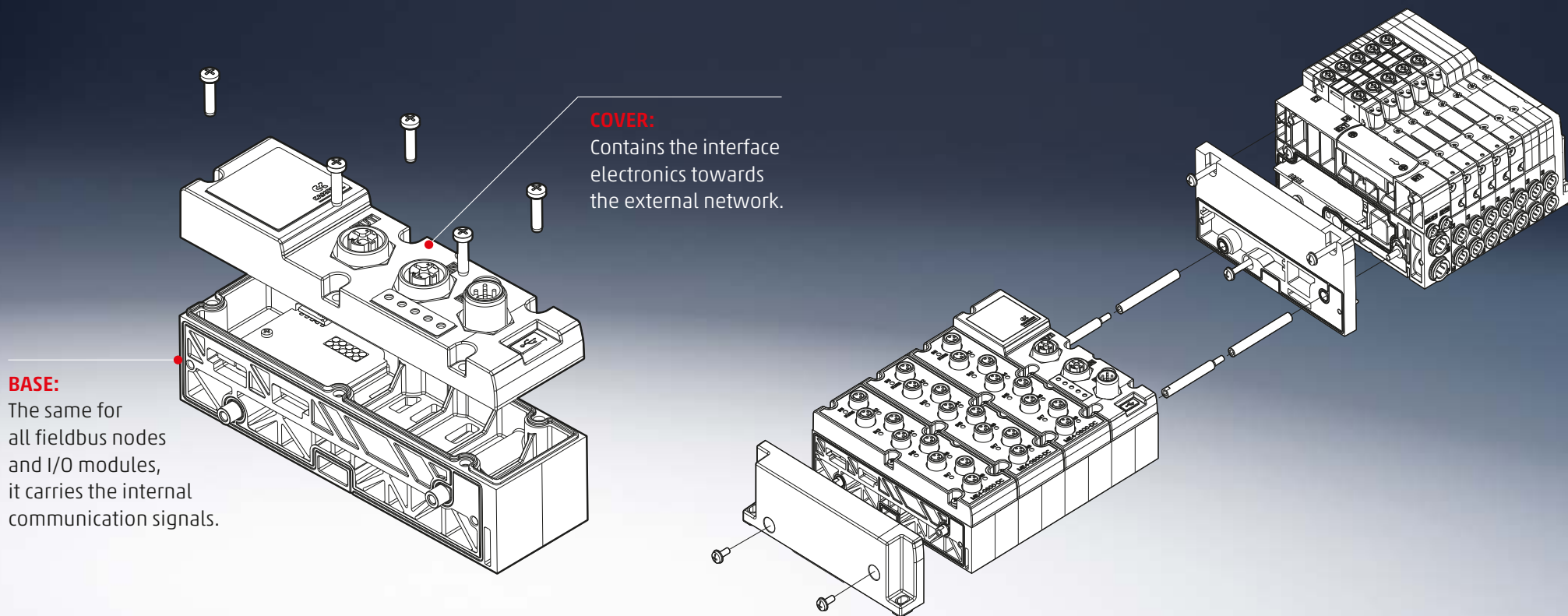
**Modular design
for maximum versatility**

MAIN TECHNICAL FEATURES

<i>Number of digital outputs/inputs</i>	128
<i>Number of analogical outputs/inputs</i>	16

EXTREME FLEXIBILITY IN RESTRICTED SPACES

Electrical terminals can be easily connected to an island by means of tie-rods so as to maintain the overall dimensions of the contained system.



Each module is composed of two separate elements, base and cover, that simplify assembly and replacement of the node, without the need to disassemble the entire island.




VIEW
CATALOGUE

SERIES PRE: DIGITAL PRESSURE MANAGEMENT

The Series PRE proportional pressure regulator is equipped with **CoilVision® technology** which constantly **monitors the operation of the solenoids** in the regulator to assess their health status. All data generated by the regulator can be transmitted wirelessly, for logging, aggregation and analysis and can be viewed through the **UVIX software**, downloadable from the Camozzi Catalogue website. The Series PRE is available in two sizes and in different configurations, including **IO-Link connectivity**. As well as the standard options with and without display, there is a version with an integral exhaust valve, which enables the system to exhaust even without a power supply. A **manifold version** enables the control of several outlets with only one inlet, while a version with an additional external sensor connection enables **pressure control at any point in the system**.



AVAILABLE VERSIONS

- IO-Link version
- 
- Manifold version
- Version with integrated exhaust valve

BENEFITS



Integrated diagnostics and predictivity



Compatible with OXYGEN



Configuration flexibility



UL Recognized Components for Canada and the United States



Easy integration with Series MD FRL Units

MAIN TECHNICAL FEATURES

Flow (Qn)	PRE104 - 1100 NL/min PRE238 - 4600 NL/min
Pneumatic ports	G1/4 - G3/8 -1/4 NPTF



VIEW CATALOGUE

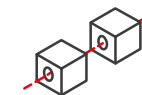
SERIES PME: COMPACT, LIGHT AND WITHOUT COMPROMISE

The Series PME proportional pressure regulator is the ideal solution for industrial applications that require **accurate pressure control**. This new pressure regulator offers a high pneumatic performance, despite having its weight and dimensions reduced to a minimum to allow **greater flexibility in its use**. Series PME is available in two sizes and versions. **One version has an integrated exhaust valve that allows the system to discharge even in the absence of power. The second is a manifold version, ideal for controlling several outlets with only a single air inlet. A new CANopen serial version is also available. Ideal for controlling multiple controllers on a single fieldbus and for applications that need to operate within a wide supply voltage range (12÷24 V DC).**

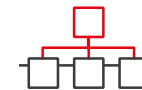


CANopen
READY

BENEFITS



Manifold version



CANopen version



Integrated exhaust valve version



Easy integration with Series MD FRL Units



Compact and essential



Configuration App that uses NFC technology

MAIN TECHNICAL FEATURES

Flow (Q_n)	PME104 - 1100 NL/min PME238 - 4600 NL/m
Pneumatic ports	G1/4 - G3/8 - 1/4 NPTF



VIEW
CATALOGUE

END LOCK CYLINDER SERIES 63: ROBUST, SAFE AND EFFICIENT

END LOCK pneumatic cylinders are fitted with **automatic mechanical end stroke locks** which guarantee safe and secure holding of the cylinder rod in both the fully retracted and fully extended positions. The locks activate and release automatically, without the need for external signals or commands and the Series 63 END LOCK cylinder complies with **comply with ISO 15552**. The automatic mechanical lock therefore makes the Series 63 END LOCK cylinders highly suitable for use in sectors and for applications where it is **essential to lock the cylinder's position**, both to avoid sliding during long stops and in situations with an absence of air, for example in transportation, printing & paper and the woodworking industry. In addition, their capability to withstand external forces, that are much higher than the force exerted by the piston, makes the END LOCK cylinder the ideal solution for applications such as lifters, positioners and presses where a **greater degree of safety** is required compared to the more traditional rod locks combined with blocking valves.



BENEFITS



Reliable and safe even under harsh environments



Increased machine performance



Reduced maintenance and set-up times



Reduced installation times



Functional machine upgrade

MAIN TECHNICAL FEATURES

Versions	Double-acting Magnetic Cushioned
Sizes	ø 32, 40, 50, 63, 80, 100, 125 mm



VIEW
CATALOGUE

CYLINDER VARIANTS

The Series 63 END LOCK cylinder is available in different variants that enable its use even **for applications in harsh environments or adverse working conditions**. These configurations are mostly used in applications that require robustness and reliability, such as the **transportation sector**, especially where trucks or special vehicles are characterized by strong vibration, frequent changes in temperature or humid and dusty working environments.

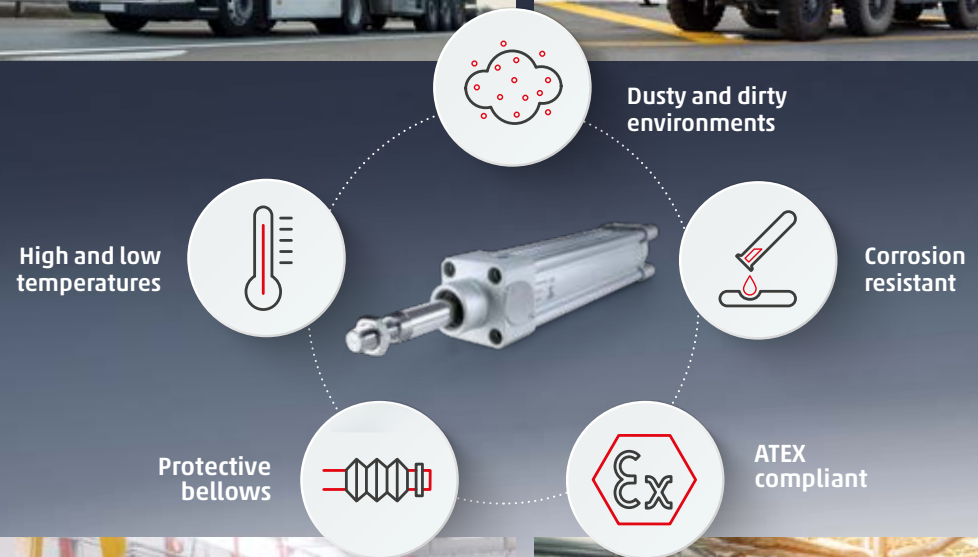
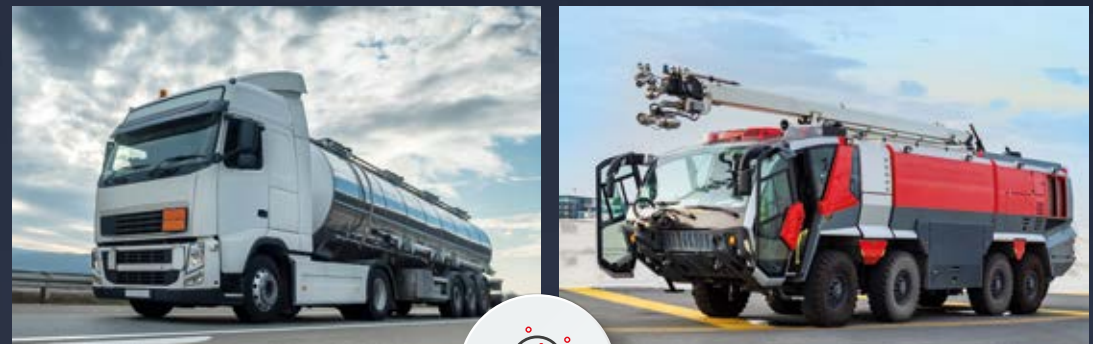
Its automatic mechanical lock makes the END LOCK cylinder highly suitable for industrial sectors like **printing & paper** or **woodworking**, where **maximum safety** is necessary because of the movement of material through lifting, stopping or pushing processes. The integrated lock allows the cylinder to be used even in **dusty working environments or in confined spaces**.

TRANSPORTATION - MOBILE AUTOMATION

Doorstep systems, trailer tailgates, actuated aerodynamic flaps, passenger ramps, retractable handrail systems.

INDUSTRIAL AUTOMATION

Vertical axes, lifters, presses and tilting units.



SERIES KL-KLE: HIGH FLOW RATES IN A COMPACT DESIGN

The latest Series KL and KLE **miniaturised 10 mm solenoid valves** have been designed for industrial applications and medical devices that require high flow rates and pressures within compact dimensions. Its **compact design, reduced weight and low energy consumption** makes the KL version the ideal solution for applications within confined spaces and limited power supply, such as portable oxygen concentrators or emergency lung ventilators. For applications that demand more robust levels of performance, the KLE version has been designed to control higher pressures and flow rates compared to traditional solenoid valves. The body size and overall dimensions of both versions have been designed to allow **easy integration with manifold systems or subbases** and to be quickly installed on devices and machines. Series KL and KLE are available in different models to satisfy any application across all the main sectors of **industrial automation and life science**.



BENEFITS



Reduced installation times



Easy and flexible
to install in the system



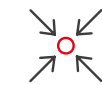
Energy efficient



High reliability



Components compliant
with medical devices



Compact design
and reduced weight
for portable devices

MAIN TECHNICAL FEATURES

Size	10 mm
Orifice diameter	0.6 ... 1.6 mm



VIEW
CATALOGUE

SERIES MX SAFEMAX WITH SOFT START VALVE: SAFETY AT YOUR FINGERTIPS

The new Series MX SAFEMAX soft start valve enables **gradual pressurisation of the system, while maintaining all safety functions**. The compact dimensions and the internal construction of the components allows **easy integration of the soft start valve with Series MX2** air treatment units without the need for additional connection interfaces.

The soft start valve is positioned upstream of the safety valves, so does not interfere with the exhaust air flow and allows the safety valves to **quickly discharge the system in the event of an emergency**.



BENEFITS



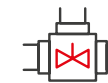
Compliant with Machinery Directive 2006/42/EC



Easy integration with Series MX2 FRL Units



Solutions to achieve up to Performance Level E



Integrated soft start valve



No connection interfaces needed

MAIN TECHNICAL FEATURES

Performance level (PL)	
Single version	category 2, PLd
Double version	category 4, PLe



VIEW CATALOGUE

SERIES ASX: FLUID CONTROL FOR HIGH-END APPLICATIONS

The angle seat valve is a pneumatically-operated valve, **designed to control steam, liquids, gas and fluids** that contain suspended solid particulate matter. The angled mount and design of the valve enable a high and constant flow, whilst ensuring a low pressure drop.

Made entirely of stainless steel, this valve is the ideal solution for many industrial applications, from steam production and water treatment plants to the food and chemical industries, where besides high flow rates, the **control of viscous fluids** is also required. The Series ASX is available in a range of different versions based on the nominal diameter, covering both control and process connections. There are also one-way flow direction models available for use in applications where it may be necessary to prevent or **reduce water-hammer effects** when closing the valve.



VERSION WITH WELDED ENDS
DIN 11850-2
AND DIN 11850-3

THREADED VERSION
BSP DIN ISO 228-1, BSPT DIN 2999-1
NPT ASME B1.20.1

TRI-CLAMP VERSION
ISO 2852

FLANGED VERSION
DIN 2543

BENEFITS



High flow rate



Low fluid resistance



Versions available
that prevent the
water-hammer effect



Compliant with Directive
PED 2014/68/EU



Compliant with
the ATEX Directive

MAIN TECHNICAL FEATURES

Functions	2/2 NC 2/2 NO 2/2 Double Acting
Flow coefficient Kv (m ³ /h)	2.2 ... 132



VIEW
CATALOGUE

SERIES ASP: FLUID CONTROL FOR COST-EFFECTIVE APPLICATIONS

Series ASP directly operated angle seat valves are the ideal solution for industrial applications that require **robust and resistant solutions**. They are compatible with mains gas supplies, inert liquids and fluids containing suspended solid particulate matter.

The Series ASP is available in different models and with **threaded connections** ranging from 3/8" to 2-1/2". It also comes in **2 versions**, one with the flow direction above the poppet for gas and steam applications and the other with the flow direction under the poppet, for liquids.



G3/8" BSP
0 ÷ 20 BAR
KV 2.6

G2-1/2" BSP
0 ÷ 6 BAR
KV 65

BENEFITS



Differential pressures up to 20 bar



High flow rate



Low fluid resistance



Versions available that prevent the water-hammer effect



Compliant with Directive PED 2014/68/EU

MAIN TECHNICAL FEATURES

Functions	2/2 NC 2/2 NO 2/2 Double Acting
Flow coefficient Kv (m ³ /h)	2.6 ... 65



VIEW
CATALOGUE


SERIES 7000 FLUIDICS: THE NEW PUSH-IN FITTING FOR COOLING SYSTEMS

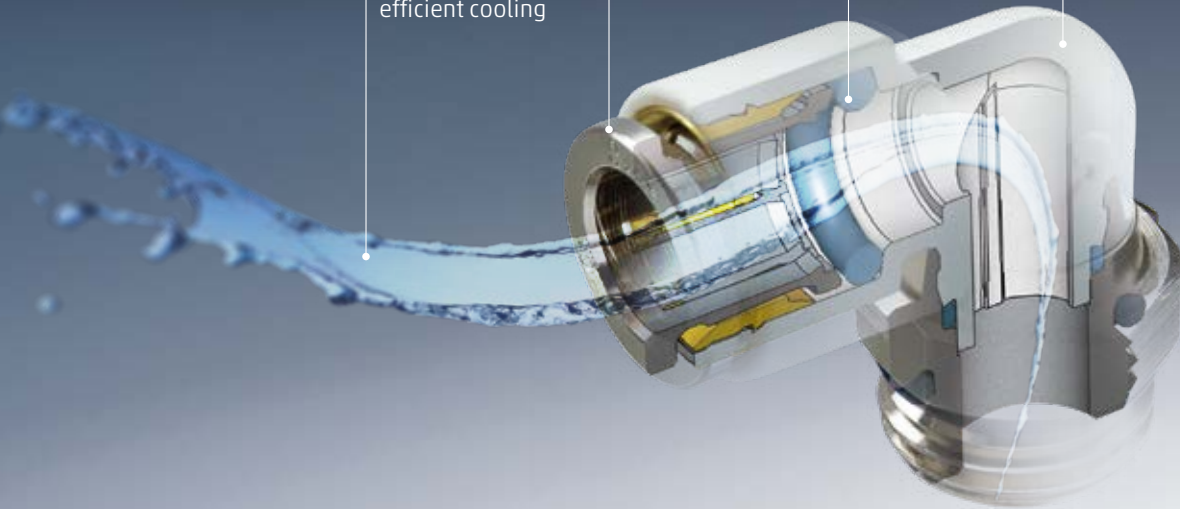
Series 7000 Fluidics push-in fittings enable smooth passage of fluids in **cooling systems**. The Series 7000 Fluidics fitting range has been designed with a **special technopolymer**, based on renewable raw materials, that allows the component to **resist water absorption, temperature variations and cooling liquid additives**. The material maintains constant dimensional stability in contact with different fluids and does not breakdown with age. Advanced gripping characteristics make the Series 7000 Fluidics an excellent alternative to traditional fittings, **guaranteeing a uniform tightening on the whole surface of the tube**. This enhances high reliability and resistance to repeated connections and disconnections of the tube. Reliable connection, compact dimensions and easy installation in confined spaces are only some of the features that make these new fittings an innovative solution for a wide range of cooling systems.

FULL FLOW
Designed for optimal flow and efficient cooling

RELIABLE CONNECTION

EPDM SEAL
For Industrial water resistance

 **PA11 BODY**
Bio-sourced and reliable



BENEFITS



Easy to connect and disconnect



Resistant to water pressure and erosion



Resistant to corrosion



Dimensional stability with water contact



Long life cycle

MAIN TECHNICAL FEATURES

Tube external diameters | 6, 8, 10, 12, 16 mm



VIEW CATALOGUE

COMPUTER AND ELECTRONICS COOLING

Applications:

- **Data centre racks**
- **Water cooling for servers and processors**
- **Aluminium cold plates**
- **Energy Storage:** power packs, battery racks, fuel cells



INDUSTRIAL EQUIPMENT COOLING

Applications:

- **Energy:** Fuel cells, batteries, energy storage
- **Lasers and Welding:** Laser heads and generators, welding pliers, chillers
- **Plastic Injection:** Moulds, chillers



Contacts

Camozzi Automation S.p.A.

Società Unipersonale
Via Eritrea, 20/I
25126 Brescia
Italy
Tel. +39 030 37921
marketing@camozzi.com

Customer Service

Tel. +39 030 3792790
service@camozzi.com

Export Department

Tel. +39 030 3792253
sales@camozzi.com



Automation

A Camozzi Group Company
www.camozzi.com

